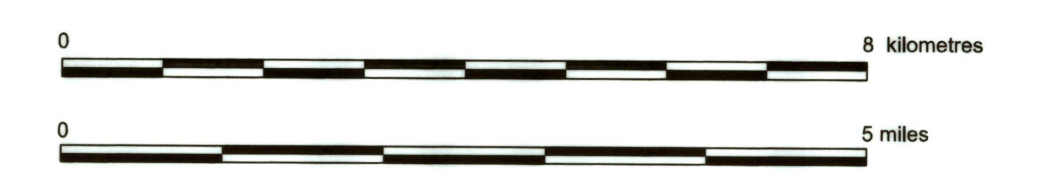
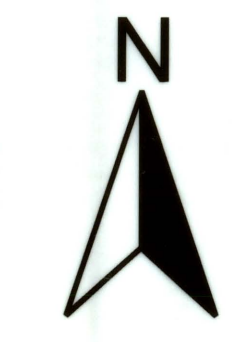


Filed in the Office of the Director of Surveys at Winnipeg, this 4th day of November, 2017, as Plan No. **20612**

Silver
Director of Surveys

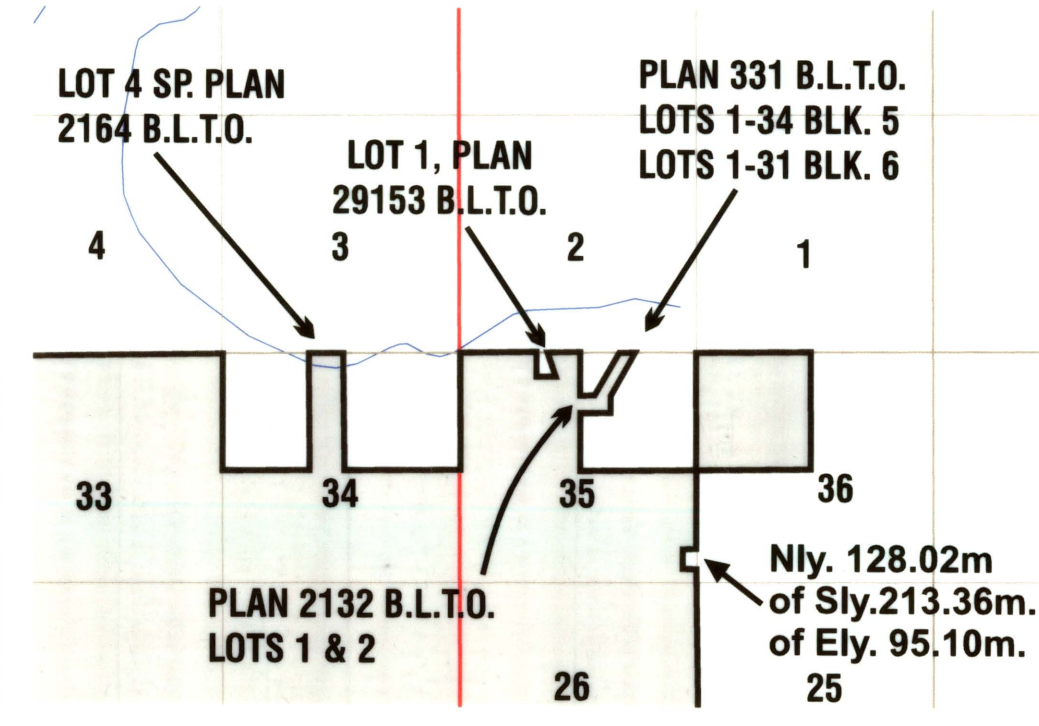
ADMINISTRATIVE BOUNDARY PLAN OF BRANDON SCHOOL DIVISION



Unless otherwise indicated the School Division Boundary follows the north and east limits of sections and quarter sections.

School Division Boundary is shown bordered thus

DETAIL AT "A" (not to scale)



Approved this 3rd day of November 2017

Sham Curtis
Department of Education and Training
Education et Formation

Certified Correct this 6th day of September 2017
D. Hoyle
Dewey Michael Roger Hoplock M.L.S.