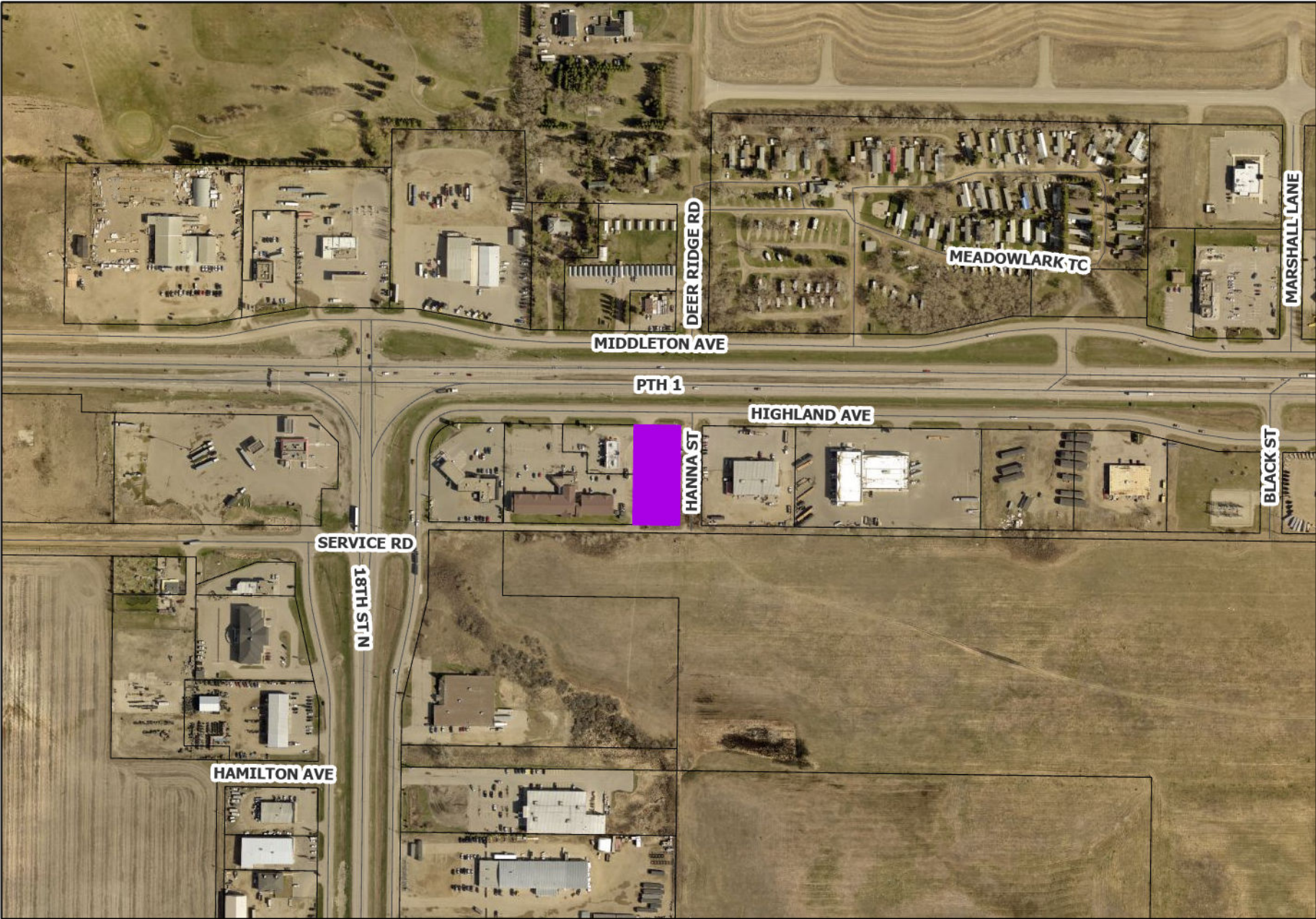


Conditional Use Application (C-07-25) - 1520 Highland Ave



Conditional Use Application



Conditional Use C-07-25
 1520 Highland Avenue
 Lot 3 Plan 34502 BLTO
 In NW 1/4 35-10-19 WPM



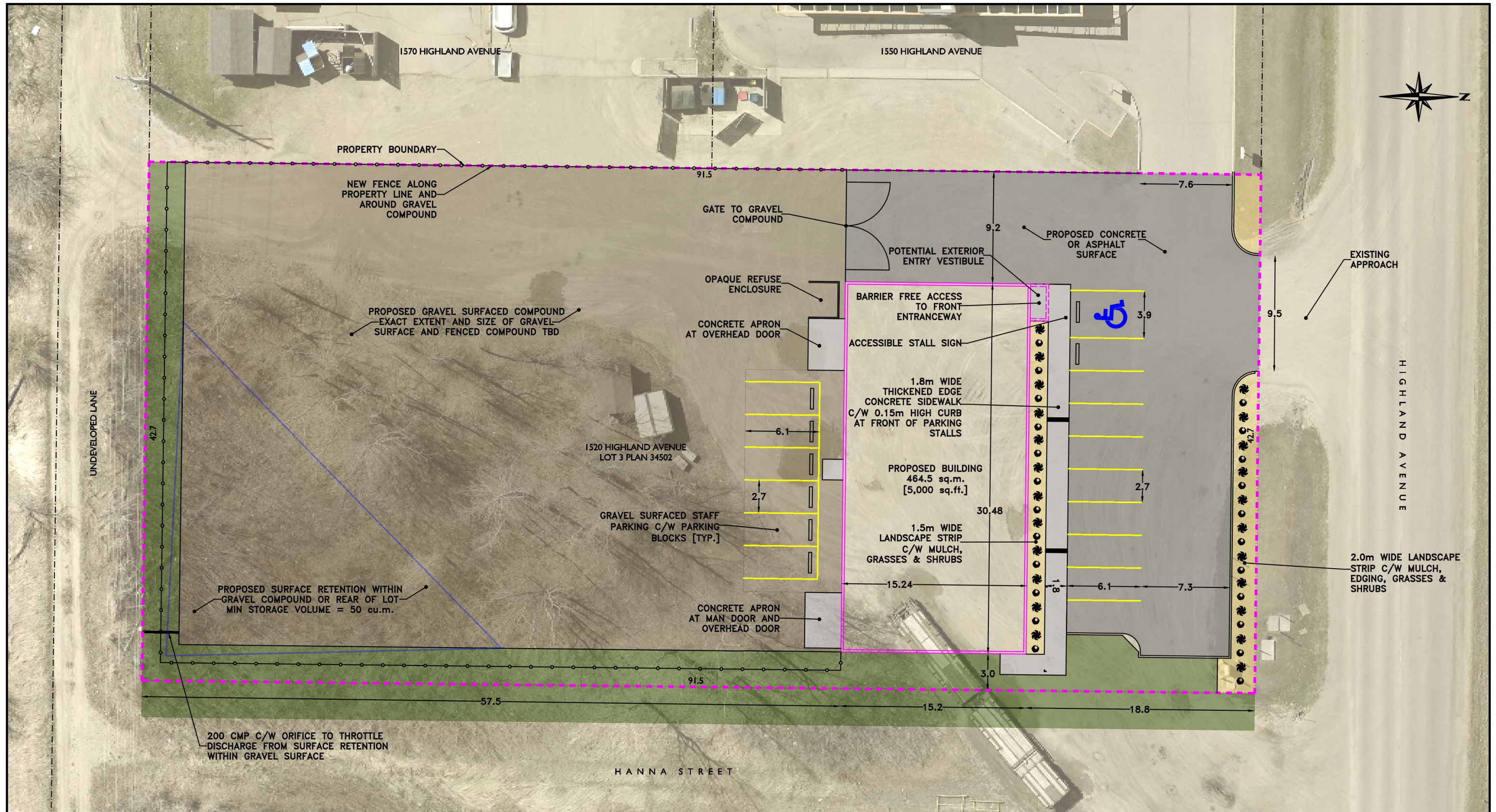
LEGEND

 Affected Lot

**Planning & Buildings
 Department**



Map Created: 08/27/2025
 Revised:



FOR EXACT PROPERTY DIMENSIONS REFER TO LOT STAKING CERTIFICATE
 FOR DETAILS ON REGISTERED EASEMENTS/CAVEATS REFER TO REGISTERED LAND TITLE

BENCHMARK TBD
 ALL WORK SHALL BE PERFORMED AS STATED IN THE LATEST EDITION OF THE CITY OF BRANDON STANDARD CONSTRUCTION SPECIFICATIONS.
 ALL DIMENSIONS ARE IN METRES
 ALL ELEVATIONS ARE IN METRES ABOVE SEA LEVEL

ES ENGINEERS
 GEOSCIENTISTS
 MANITOBA
 Certificate of Authorization
 G.D. Newton & Associates Inc.
 No. 4633



LEGEND PROPERTY LINE: - - - - - PROPERTY BOUNDARY: - - - - - FENCE: - - - - - PARKING LINES: - - - - -		ASPHALT EDGE: - - - - - BARRIER CURB: - - - - - LANDSCAPE BEDS: - - - - - ASPHALT SURFACE: - - - - -		BUILDING OUTLINE: - - - - - SOD OR SEEDED GRASS: - - - - - CONCRETE SURFACE: - - - - -	
G.D. NEWTON AND ASSOCIATES INC. BRANDON, MANITOBA (204)914-9938			1520 HIGHLAND AVENUE CONDITIONAL USE SITE PLAN		
DATE: 2025/08/12		SCALE: 1:300		DRAWING C2	