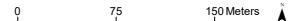
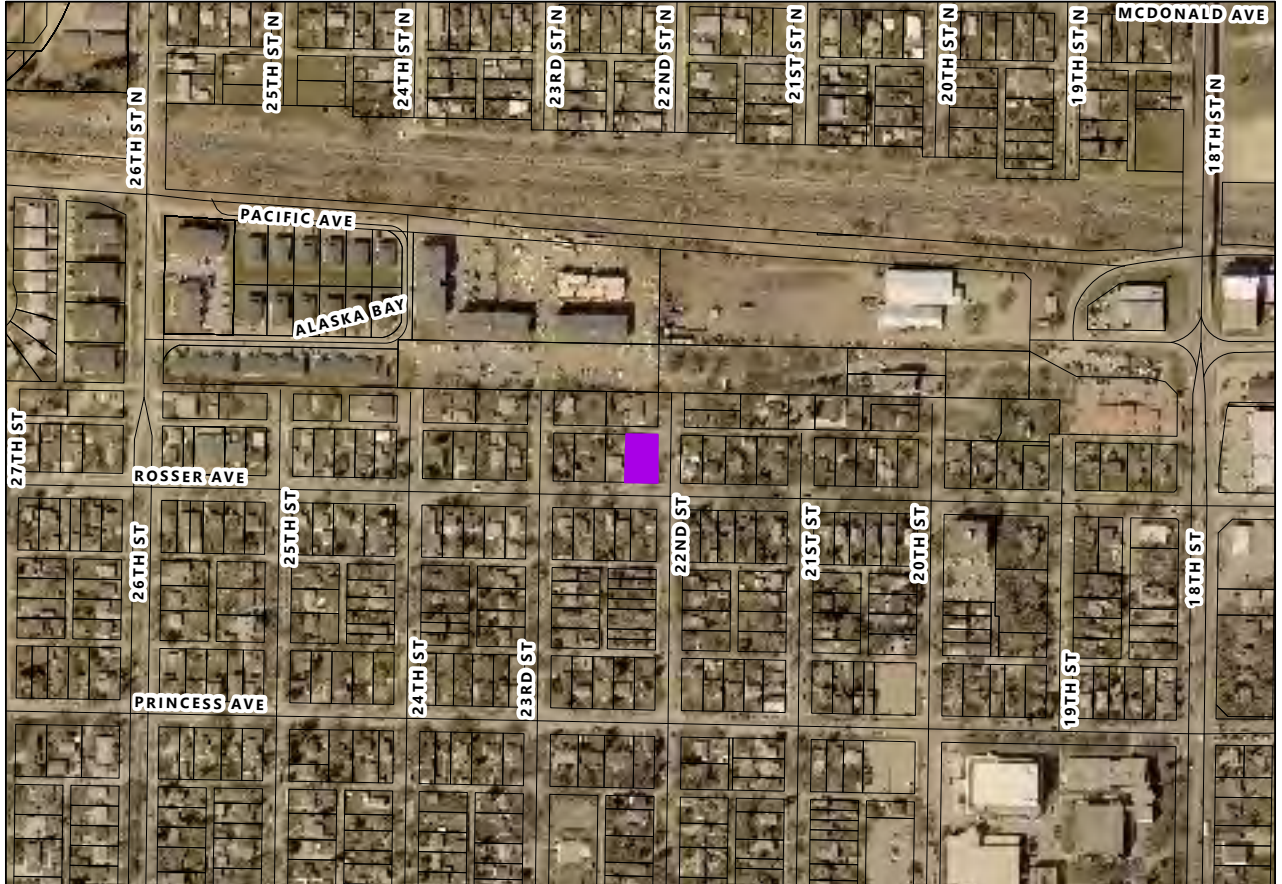


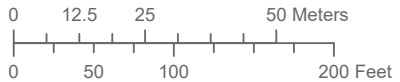
Conditional Use Application C-09-23 - 2211 Rosser Avenue



Conditional Use Application



Conditional Use Application C-09-23
 2211 Rosser Avenue
 Lots 1-3 Block 13 Plan 15
 in SE 1/4 22-10-19 WPM



LEGEND

 Affected Lot

**Planning & Buildings
 Department**



Map Created: 09/19/2023
 Revised: