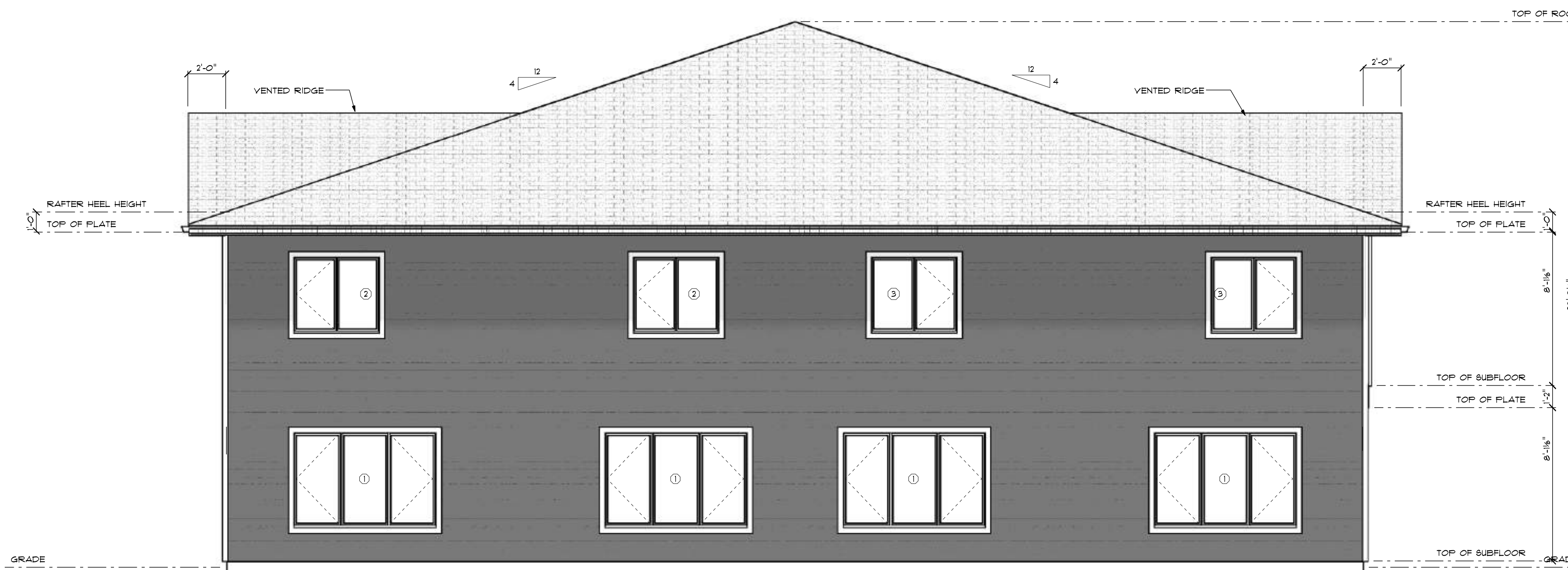


**EAST ELEVATION**  
SCALE: 1/4" = 1'-0"



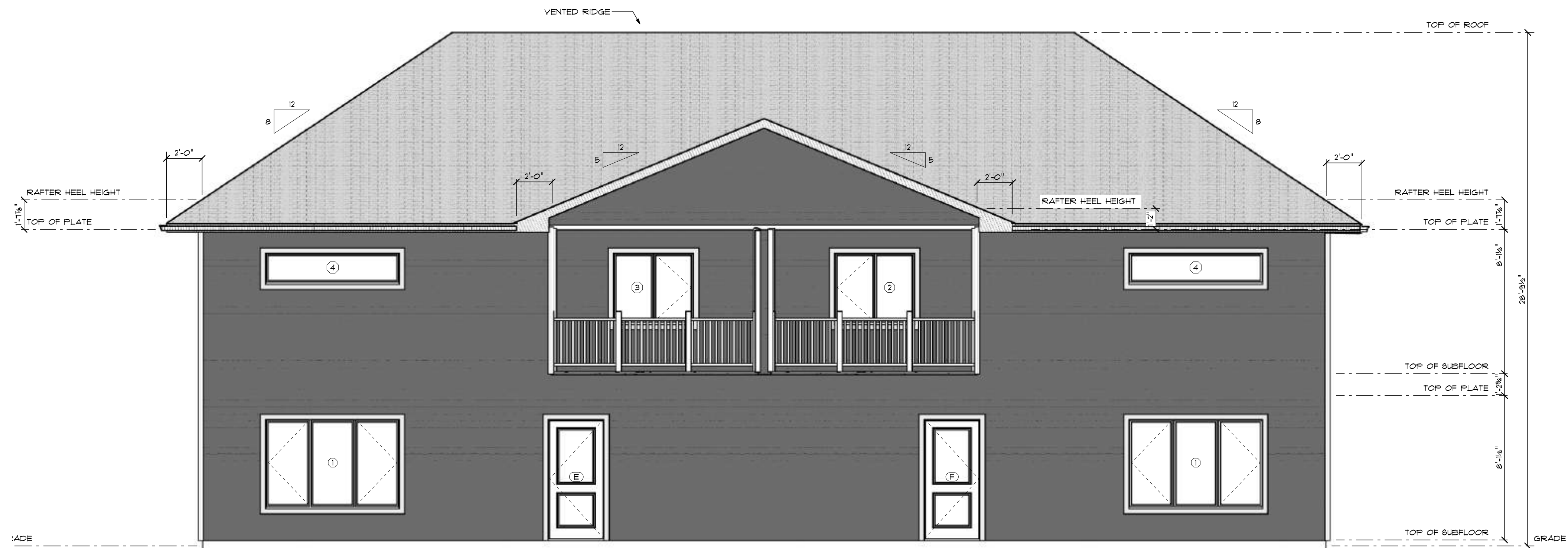
**SOUTH ELEVATION**  
SCALE: 1/4" = 1'-0"

PROJECT DESCRIPTION: 3780 SQ. FT. 4 PLEX		DO NOT SCALE DRAWINGS VERIFY ALL DIMENSIONS, DATUMS, & ELEVATIONS PRIOR TO COMMENCEMENT OF WORK.	PRELIMINARY 2 of 7
FAX: MOBILE:(204) 510-1153 PHONE: cody.silvius@alairhomes.com			
PROJECT FOR: ALAIR HOMES MELANO 4 PLEX 248 4th St. Brandon MB		DRAWING TITLE: ELEVATIONS 1	
DRAWN BY: VERLIN SCALE: 1/4" = 1'-0" DATE: April 13, 2023		PROJECT NUMBER: 23006	

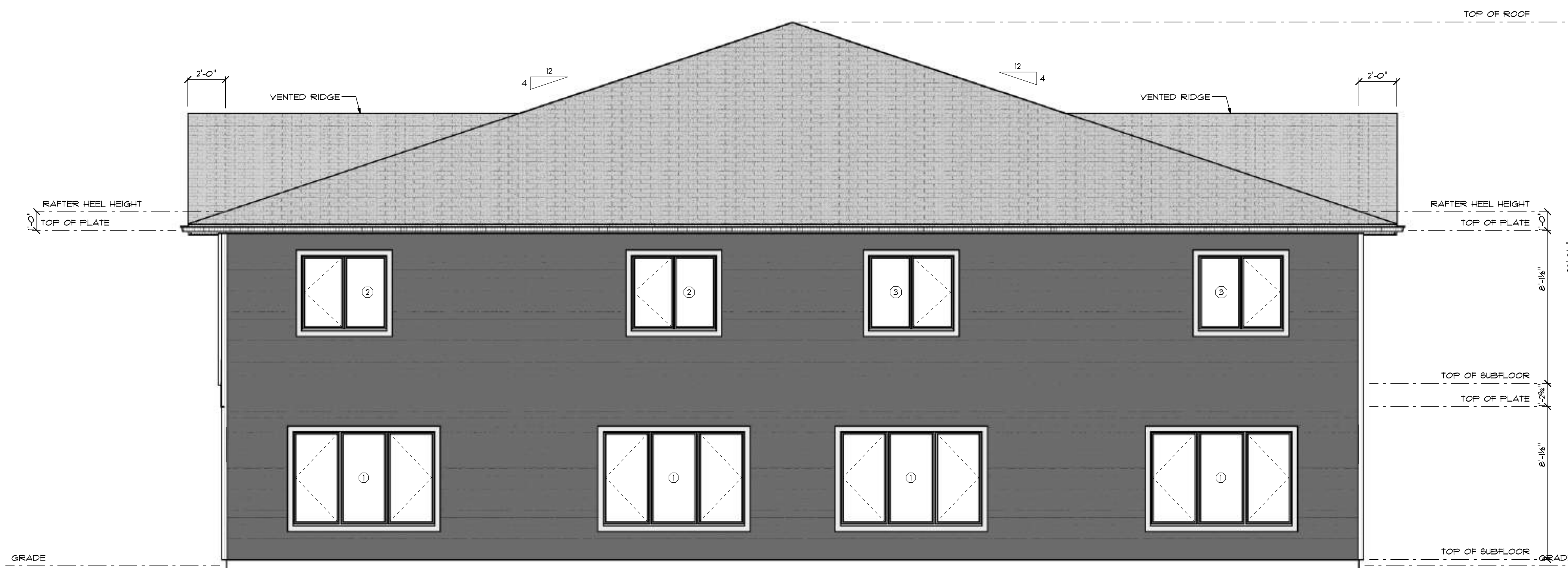
**WESTMAN DRAFTING & DESIGN SERVICES**  
34 Railway Street PHONE: 204-212-0478  
Binrie verlin@westmandrafting.com  
Manitoba ROJ 020

DETAIL NUMBER  
2  
4  
4  
MARKER PG.\* DET. PG.\*

SECTION LETTER  
A  
3  
5  
SECT. PG.\* DET. PG.\*



**WEST ELEVATION**  
SCALE: 1/4" = 1'-0"



**NORTH ELEVATION**  
SCALE: 1/4" = 1'-0"

PROJECT DESCRIPTION: 3780 SQ. FT. 4 PLEX		FAX: MOBILE:(204) 510-1753 PHONE: cody.silvius@alairhomes.com	DO NOT SCALE DRAWINGS VERIFY ALL DIMENSIONS, DATUMS, & ELEVATIONS PRIOR TO COMMENCEMENT OF WORK.	PRELIMINARY 3 of 7
PROJECT FOR: ALAIR HOMES MELANO 4 PLEX 248 4th St. Brandon MB				
DRAWN BY: VERLIN		DRAWING TITLE: ELEVATIONS 2		
SCALE: 1/4" = 1'-0" DATE: April 13, 2023		PROJECT NUMBER: 23006		

**WESTMAN DRAFTING & DESIGN SERVICES**  
34 Railway Street PHONE: 204-212-0478  
Binette verlin@westmandrafting.com  
Manitoba  
R0J 0J0

DETAIL NUMBER  
2  
4  
4

MARKER  
PG.\*

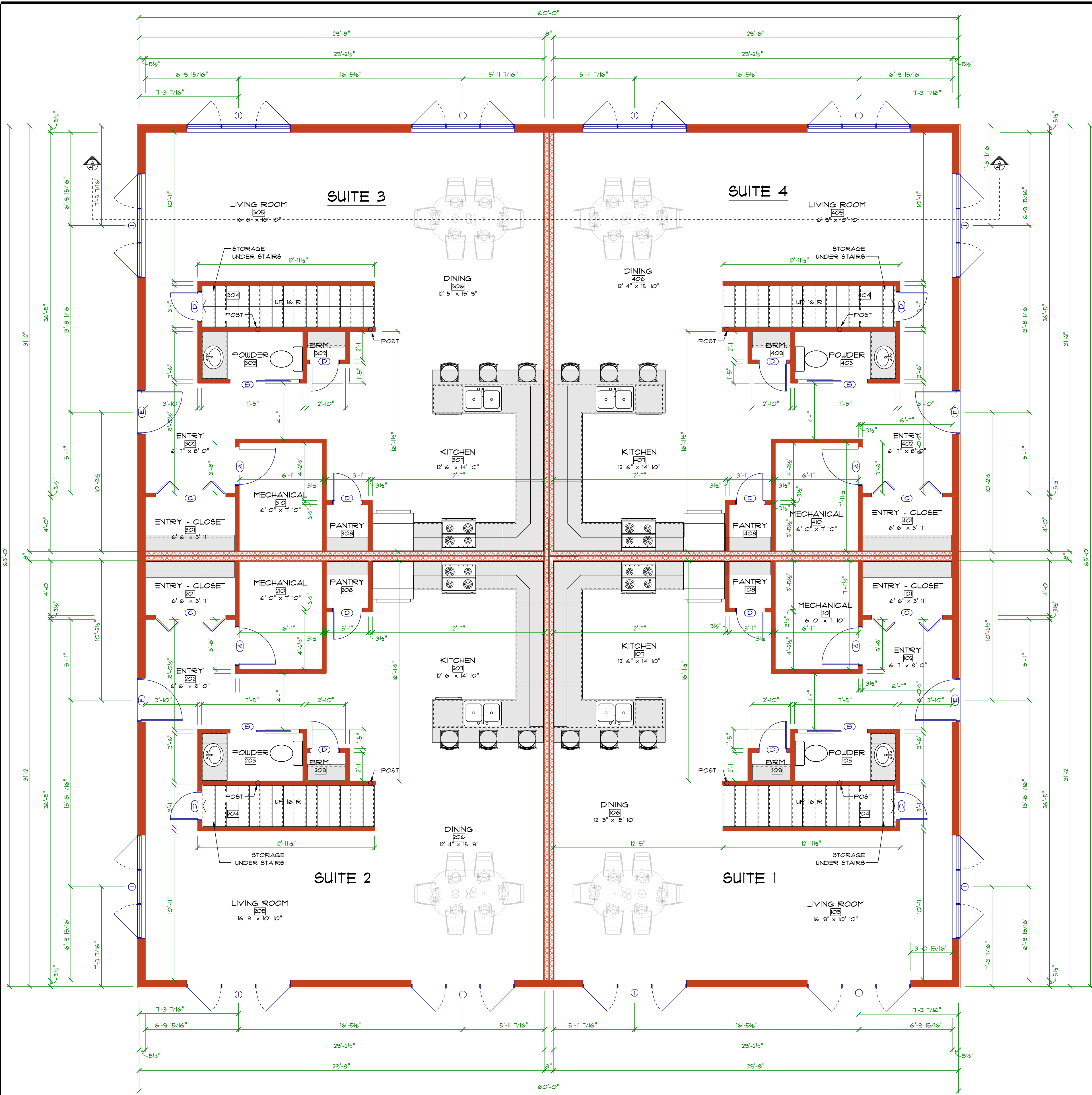
SECT. DET.  
PG.\* PG.\*

SECTION LETTER  
A  
3B

DET.  
PG.\*

PROJECT FOR:  
ALAIR HOMES MELANO 4 PLEX  
248 4th St.  
Brandon  
MB

DRAWN BY: VERLIN  
SCALE: 1/4" = 1'-0"  
DATE: April 13, 2023



MAIN FLOOR INTERIOR OPENING SCHEDULE										
ROOM SCHEDULE ID	OPENING ID	PRODUCT CODE	COUNT	R.O. WIDTH	R.O. HEIGHT	WIDTH	HEIGHT	HINGE	TOP OF OPENING	COMMENT
102	C	60X80 INTERIOR BIFOLD DOOR 2	1	5'-2"	6'-10"	5'-0"	6'-8"	LR	6'-8"	
103	B	30X80 INTERIOR POCKET DOOR 1	1	5'-11"	7'-0 1/2"	2'-6"	6'-8"	N	6'-8"	
104	D	24X80 INTERIOR SWING DOOR 1	1	2'-2"	6'-10"	2'-0"	6'-8"	R	6'-8"	
108	D	24X80 INTERIOR SWING DOOR 1	1	2'-2"	6'-10"	2'-0"	6'-8"	L	6'-8"	
109	D	24X80 INTERIOR SWING DOOR 1	1	2'-2"	6'-10"	2'-0"	6'-8"	R	6'-8"	
110	A	32X80 INTERIOR SWING DOOR 1	1	2'-10"	6'-10"	2'-8"	6'-8"	L	6'-8"	
202	C	60X80 INTERIOR BIFOLD DOOR 2	1	5'-2"	6'-10"	5'-0"	6'-8"	LR	6'-8"	
203	B	30X80 INTERIOR POCKET DOOR 1	1	5'-11"	7'-0 1/2"	2'-6"	6'-8"	N	6'-8"	
204	D	24X80 INTERIOR SWING DOOR 1	1	2'-2"	6'-10"	2'-0"	6'-8"	L	6'-8"	
208	D	24X80 INTERIOR SWING DOOR 1	1	2'-2"	6'-10"	2'-0"	6'-8"	R	6'-8"	
209	D	24X80 INTERIOR SWING DOOR 1	1	2'-2"	6'-10"	2'-0"	6'-8"	L	6'-8"	
210	A	32X80 INTERIOR SWING DOOR 1	1	2'-10"	6'-10"	2'-8"	6'-8"	R	6'-8"	
302	C	60X80 INTERIOR BIFOLD DOOR 2	1	5'-2"	6'-10"	5'-0"	6'-8"	LR	6'-8"	
303	B	30X80 INTERIOR POCKET DOOR 1	1	5'-11"	7'-0 1/2"	2'-6"	6'-8"	N	6'-8"	
304	D	24X80 INTERIOR SWING DOOR 1	1	2'-2"	6'-10"	2'-0"	6'-8"	R	6'-8"	
308	D	24X80 INTERIOR SWING DOOR 1	1	2'-2"	6'-10"	2'-0"	6'-8"	L	6'-8"	
309	D	24X80 INTERIOR SWING DOOR 1	1	2'-2"	6'-10"	2'-0"	6'-8"	R	6'-8"	
310	A	32X80 INTERIOR SWING DOOR 1	1	2'-10"	6'-10"	2'-8"	6'-8"	L	6'-8"	
402	C	60X80 INTERIOR BIFOLD DOOR 2	1	5'-2"	6'-10"	5'-0"	6'-8"	LR	6'-8"	
403	B	30X80 INTERIOR POCKET DOOR 1	1	5'-11"	7'-0 1/2"	2'-6"	6'-8"	N	6'-8"	
404	D	24X80 INTERIOR SWING DOOR 1	1	2'-2"	6'-10"	2'-0"	6'-8"	L	6'-8"	
408	D	24X80 INTERIOR SWING DOOR 1	1	2'-2"	6'-10"	2'-0"	6'-8"	R	6'-8"	
409	D	24X80 INTERIOR SWING DOOR 1	1	2'-2"	6'-10"	2'-0"	6'-8"	L	6'-8"	
410	A	32X80 INTERIOR SWING DOOR 1	1	2'-10"	6'-10"	2'-8"	6'-8"	R	6'-8"	

MAIN FLOOR EXTERIOR OPENING SCHEDULE										
ROOM SCHEDULE ID	OPENING ID	PRODUCT CODE	COUNT	R.O. WIDTH	R.O. HEIGHT	WIDTH	HEIGHT	HINGE	TOP OF OPENING	COMMENT
102	E	36X80 EXTERIOR 2 PANEL DOOR L	1	3'-2 7/16"	6'-10"	3'-0"	6'-8"	L	6'-8 1/2"	
202	E	36X80 EXTERIOR 2 PANEL DOOR L	1	3'-2 7/16"	6'-10"	3'-0"	6'-8"	L	6'-8 1/2"	
202	F	36X80 EXTERIOR 2 PANEL DOOR R	1	3'-2 7/16"	6'-10"	3'-0"	6'-8"	R	6'-8 1/2"	
402	F	36X80 EXTERIOR 2 PANEL DOOR R	1	3'-2 7/16"	6'-10"	3'-0"	6'-8"	R	6'-8 1/2"	
105	I	90X60 (30-30-30) LEFT PICTURE RIGHT	2	9"	6"	90"	60"	LNR	8 1/2"	
106	I	90X60 (30-30-30) LEFT PICTURE RIGHT	1	9"	6"	90"	60"	LNR	8 1/2"	
205	I	90X60 (30-30-30) LEFT PICTURE RIGHT	2	9"	6"	90"	60"	LNR	8 1/2"	
206	I	90X60 (30-30-30) LEFT PICTURE RIGHT	1	9"	6"	90"	60"	LNR	8 1/2"	
305	I	90X60 (30-30-30) LEFT PICTURE RIGHT	2	9"	6"	90"	60"	LNR	8 1/2"	
306	I	90X60 (30-30-30) LEFT PICTURE RIGHT	1	9"	6"	90"	60"	LNR	8 1/2"	
405	I	90X60 (30-30-30) LEFT PICTURE RIGHT	2	9"	6"	90"	60"	LNR	8 1/2"	
406	I	90X60 (30-30-30) LEFT PICTURE RIGHT	1	9"	6"	90"	60"	LNR	8 1/2"	

AREA SCHEDULE	
NAME	AREA
Gross Floor Area	3780 sq. ft.
Suite 1	945 sq. ft.
Suite 2	945 sq. ft.
Suite 3	945 sq. ft.
Suite 4	945 sq. ft.

**MAIN FLOOR**  
SCALE: 1/4" = 1'-0"

PROJECT DESCRIPTION:  
3780 SQ. FT. 4 PLEX

**WESTMAN DRAFTING & DESIGN SERVICES**  
34 Railway Street PHONE: 204-212-0478  
Birtle verlin@westmandrafting.com  
Manitoba  
R0J 0J0

DETAIL NUMBER: 2/4  
SECTION LETTER: A/35  
MARKER PG.\* DET. PG.\* SECT. PG.\* DET. PG.\*

PROJECT FOR:  
ALAIR HOMES MELANO 4 PLEX  
248 4th St.  
Brandon  
MB  
DRAWN BY: VERLIN  
SCALE: 1/4" = 1'-0"  
DATE: April 13, 2023

FAX: MOBILE: (204) 510-1753  
PHONE: cody.silvius@alairhomes.com  
DRAWING TITLE:  
MAIN FLOOR LAYOUT  
PROJECT NUMBER: 23006

DO NOT SCALE DRAWINGS  
VERIFY ALL DIMENSIONS, DATUMS, & ELEVATIONS PRIOR TO COMMENCEMENT OF WORK.