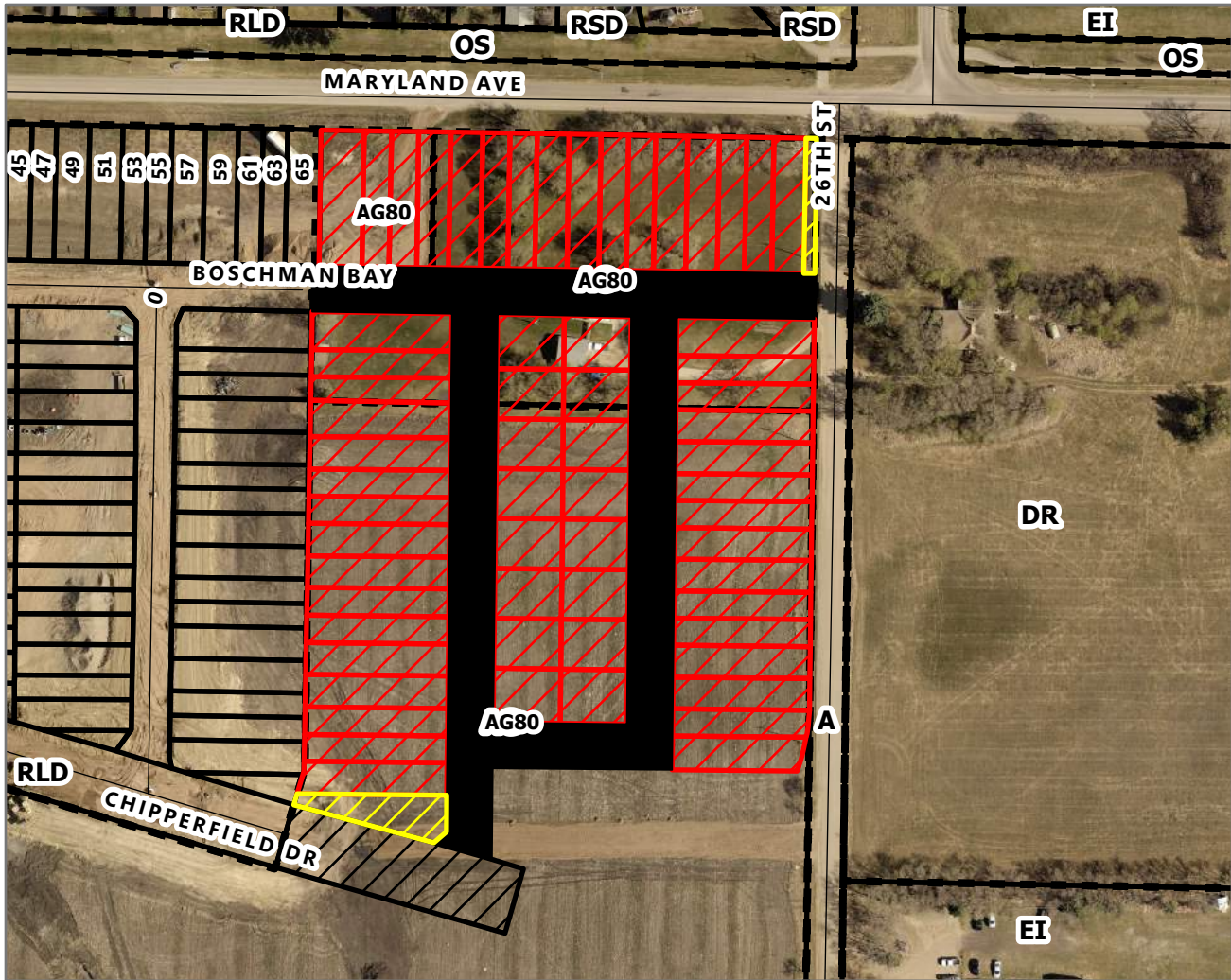


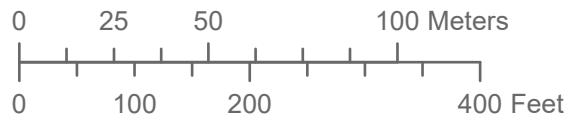








# Subdivision & Rezoning Application



Subdivision Application 4500-21-713  
 Rezoning Application Z-05-21, By law No. 7306  
 Amending By Law No. 7124  
 1906 26th Street, 1901 34th Street & 1955 34th Street  
 Various Parcels (see attached titles)



## LEGEND

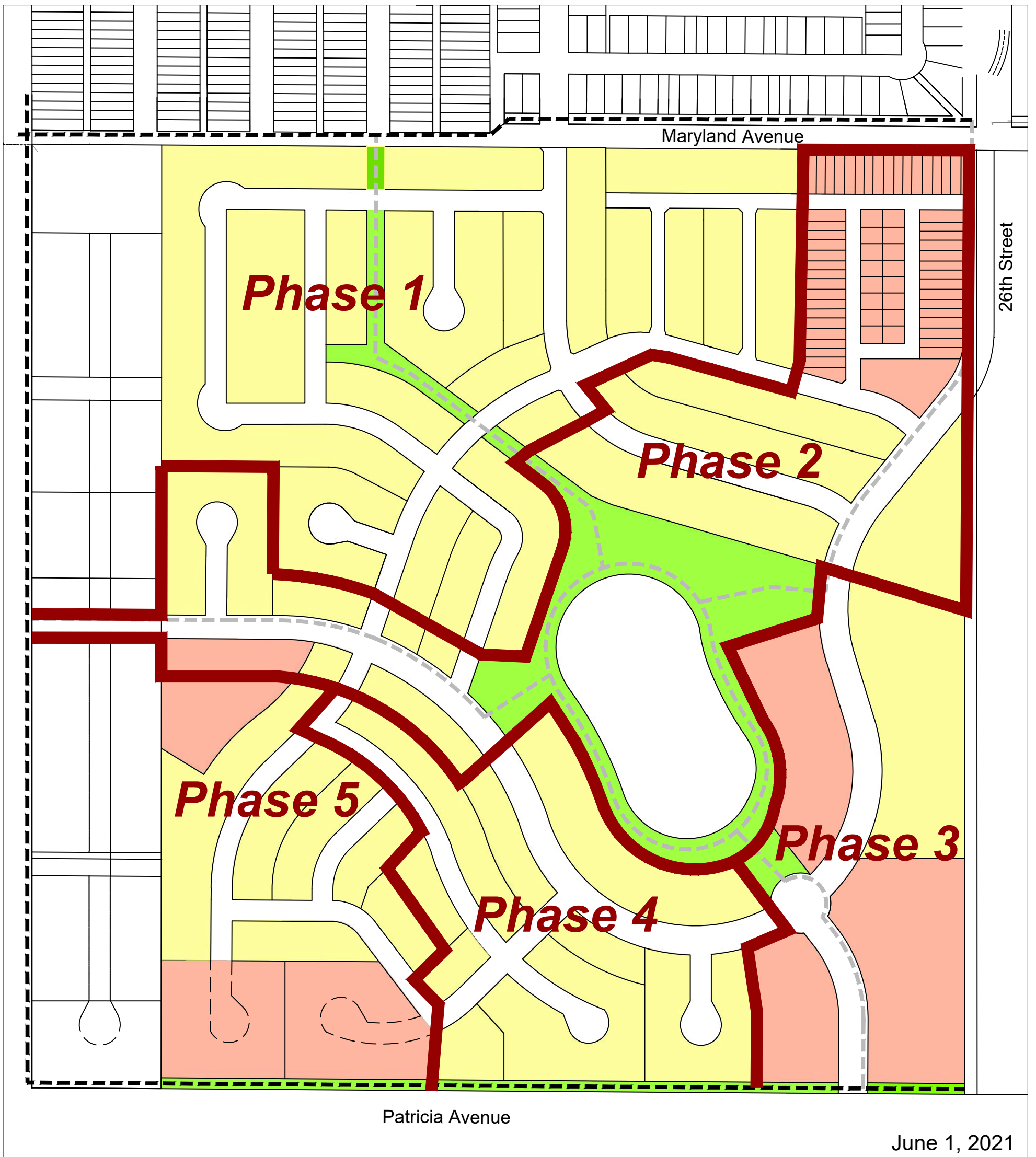
-  Proposed lots to be rezoned from AG80 to RLD
-  Proposed Public Road Extension
-  Proposed Common Element
-  Proposed Private Road

A - Agricultural  
 AG80 - Agricultural General  
 DR - Development Reserve  
 EI - Educational & Institutional  
 OS - Open Space  
 RLD - Residential Low Density  
 RSD - Residential Single Detached

**Planning & Buildings  
 Department**

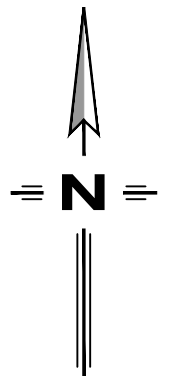


Map Created: 06/03/2021  
 Revised:



LEGEND:

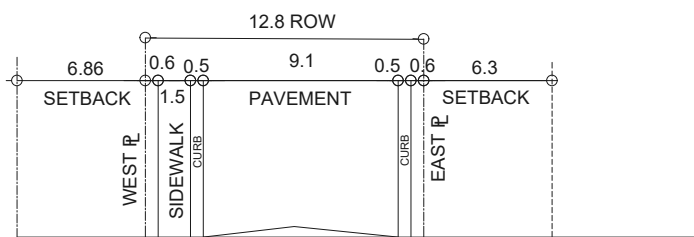
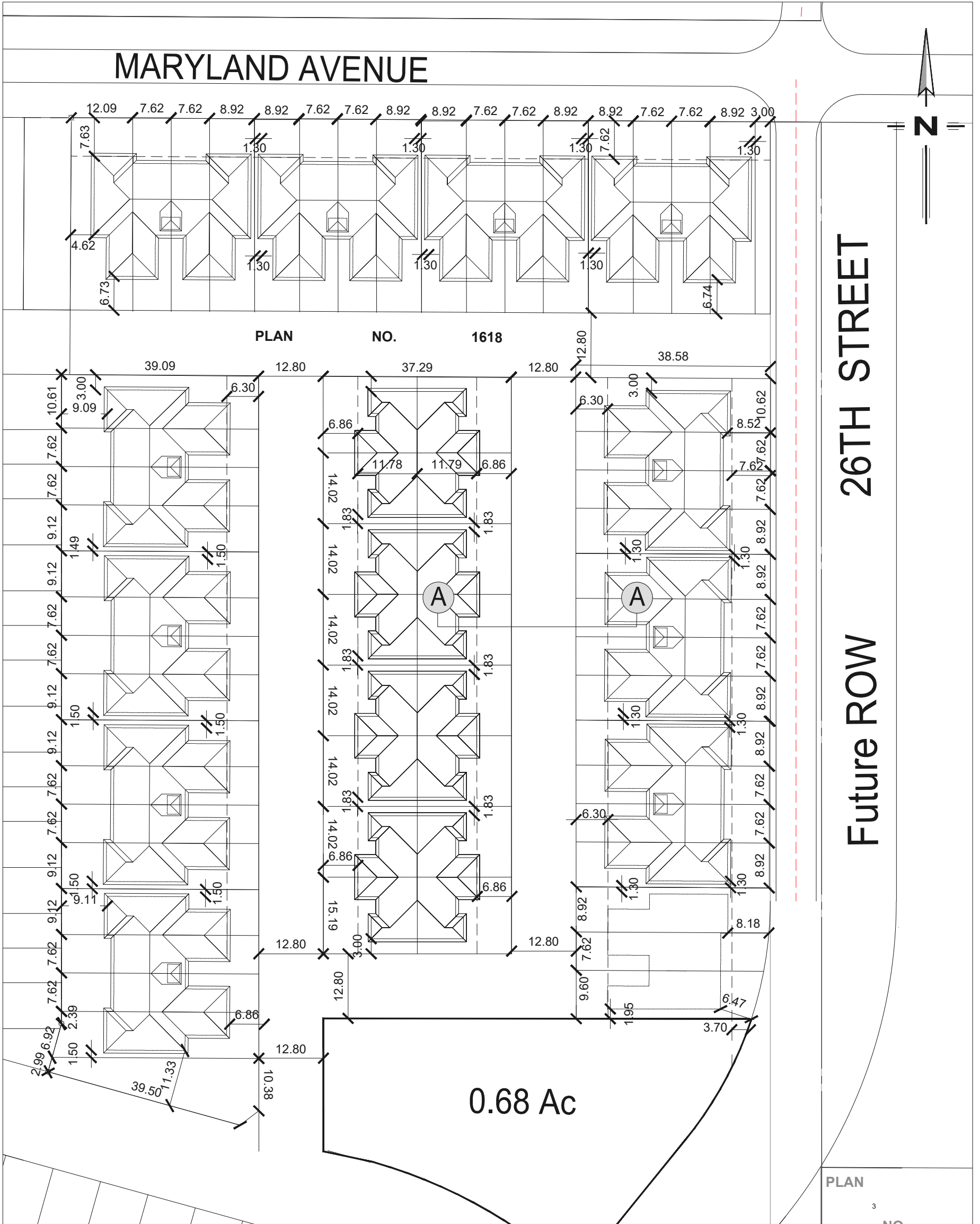
- PR-PARKS AND RECREATION
- RMD - RESIDENTIAL MODERATE DENSITY
- RLD - RESIDENTIAL LOW DENSITY



Source:



Bellafield Development  
Phasing Plan  
Brandon, MB



C:\Bellafield

Source:

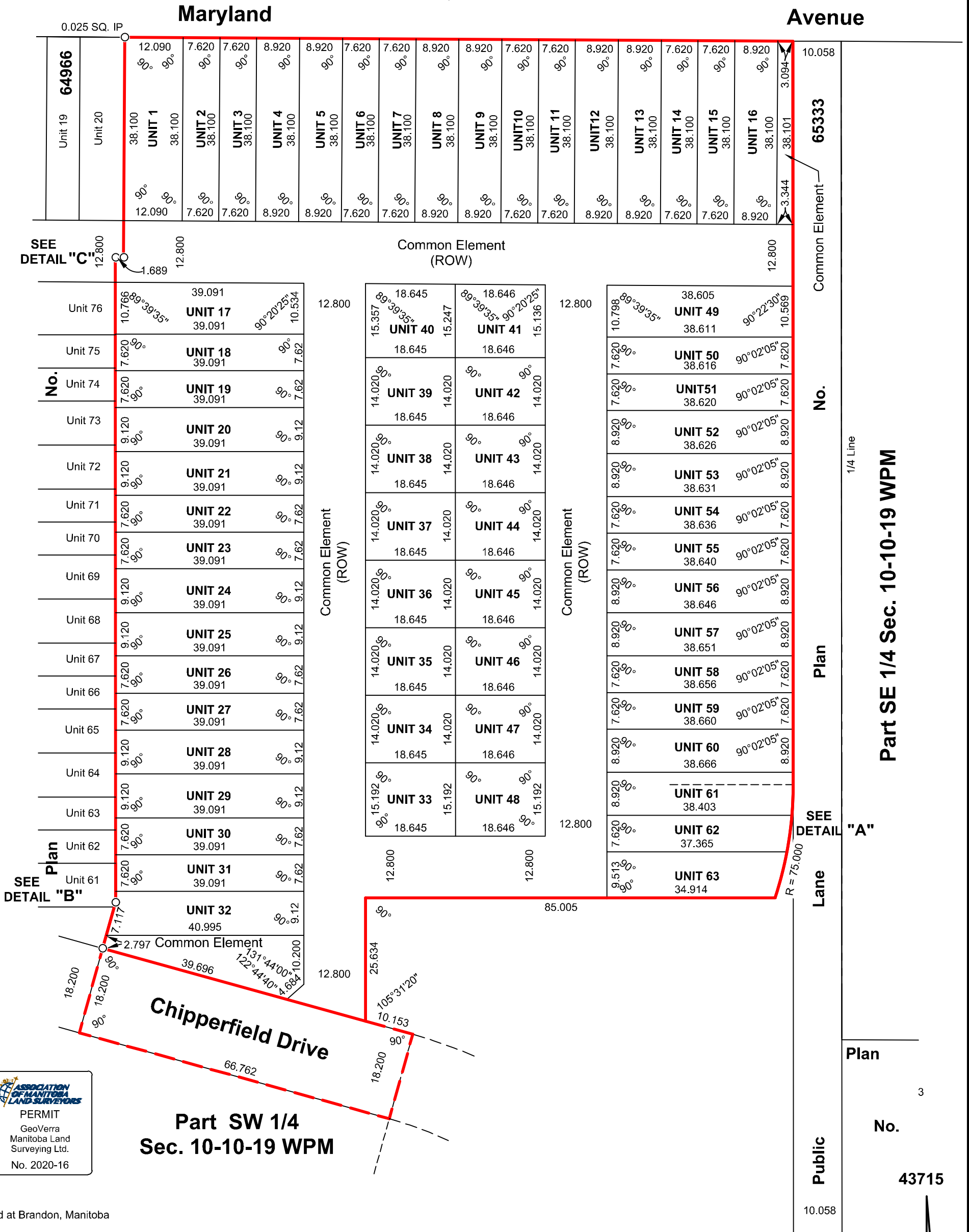
Scale: 1:750



Bellafield Subdivision  
Proposed Lotting Plan  
Brandon, MB



**Subdivision Application Map**  
**Proposed Subdivision of Part of**  
**SW 1/4 Sec. 10, Twp. 10, Rge. 19 WPM**  
**Including Parcel A, Plan No. 1618**  
**Bare Land Condominium**  
**Brandon, Manitoba**



**ASSOCIATION OF MANITOBA LAND SURVEYORS**  
PERMIT  
GeoVerra  
Manitoba Land Surveying Ltd.  
No. 2020-16

**Part SW 1/4**  
**Sec. 10-10-19 WPM**

Dated at Brandon, Manitoba  
This 24th day of March, 2021

*[Signature]*

Timothy W. Longstaff  
Manitoba Land Surveyor  
Authorized to practice under the "Land Surveyors Act" of Manitoba

This document is not valid unless it bears an original signature (in blue ink) and embossed with the approved seal of the Land Surveyor across said signature. © GeoVerra Manitoba Land Surveying Ltd., 2021. All rights reserved. No person may copy, reproduce, transmit, or alter this document and no person may distribute or store copies of this document, in whole or in part.

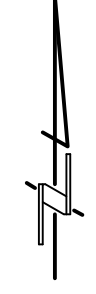
**NOTE:**

Survey monuments found on the ground are described and shown thus   
All plans referred to are on record in Brandon Land Titles Office  
Land affected by this proposal is shown bordered thus

Scale - 1: 800	Initials: HB - FG	Field Book:
Drawing: 21-00357-SAM-R0	Project No. : 21-00357-BD	Page 1 of 3

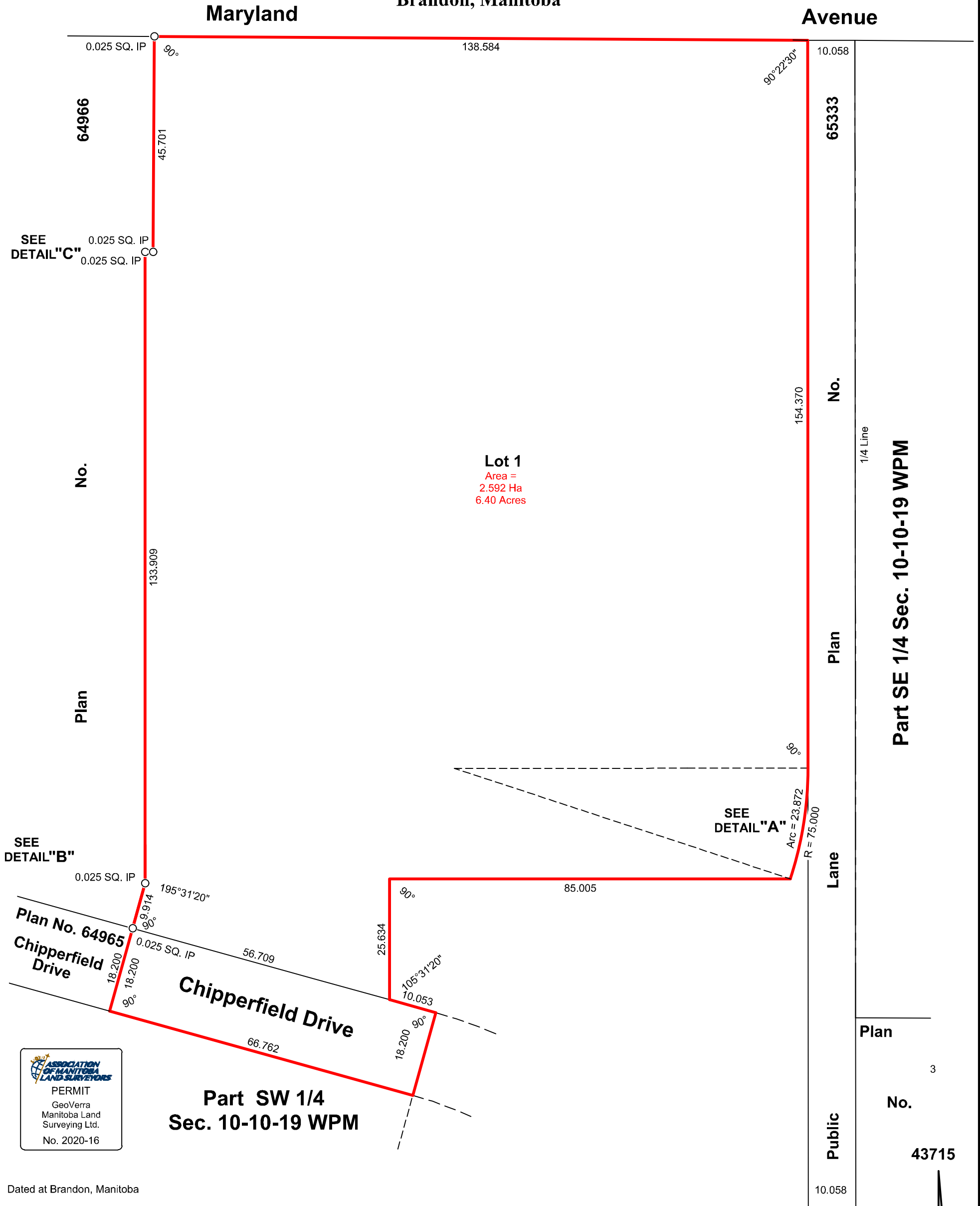
**Part SE 1/4 Sec. 10-10-19 WPM**

**No. 43715**



**METRIC**

**Subdivision Application Map**  
**Proposed Subdivision of Part of**  
**SW 1/4 Sec. 10, Twp. 10, Rge. 19 WPM**  
**Including Parcel A, Plan No. 1618**  
**Subdivision To Facilitate**  
**Bare Land Condominium And Open Public Roads**  
**Brandon, Manitoba**



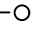
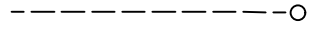

Dated at Brandon, Manitoba  
This 24th day of March, 2021

*[Signature]*

Timothy W. Longstaff  
Manitoba Land Surveyor  
Authorized to practice under the "Land Surveyors Act" of Manitoba

This document is not valid unless it bears an original signature (in blue ink) and embossed with the approved seal of the Land Surveyor across said signature. © GeoVerra Manitoba Land Surveying Ltd., 2021. All rights reserved. No person may copy, reproduce, transmit, or alter this document and no person may distribute or store copies of this document, in whole or in part.

**NOTE:**

Survey monuments found on the ground are described and shown thus   
All plans referred to are on record in Brandon Land Titles Office  
Land affected by this proposal is shown bordered thus  

METRIC

Scale - 1: 800	Initials: HB - FG	Field Book:
Drawing: 21-00357-SAM-R0	Project No. : 21-00357-BD	Page 2 of 3

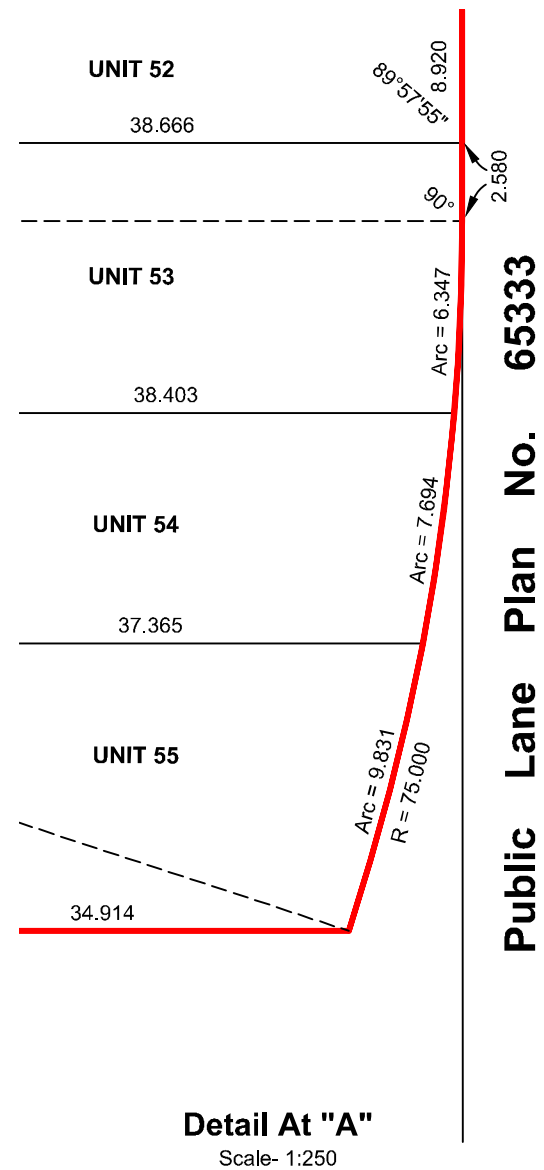
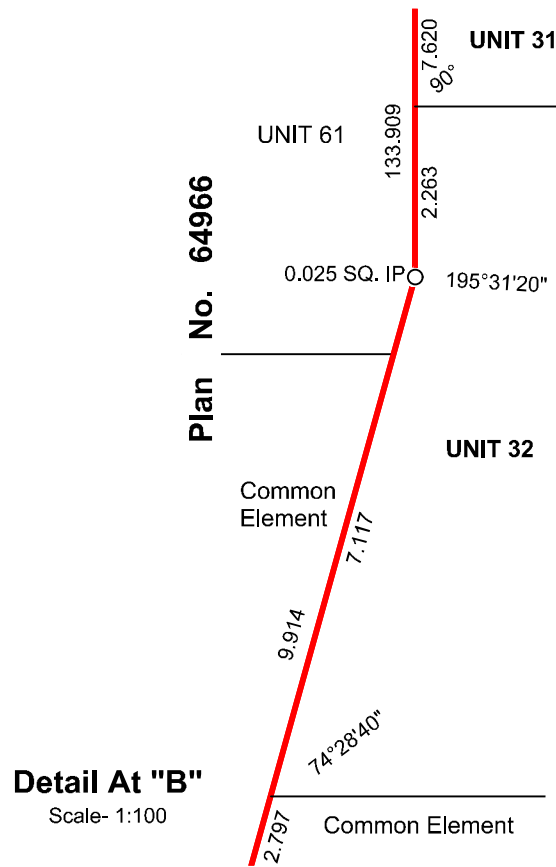
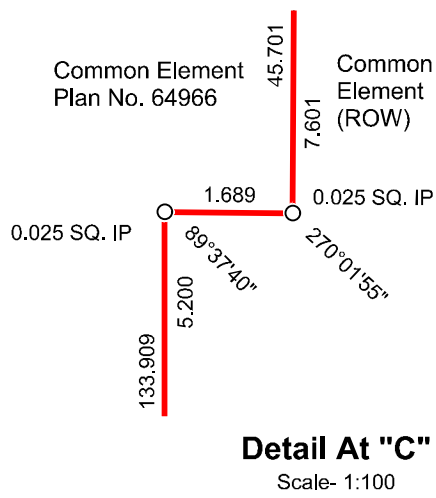
**Subdivision Application Map**  
**Proposed Subdivision of Part of**  
**SW 1/4 Sec. 10, Twp. 10, Rge. 19 WPM**  
**Including Parcel A, Plan No. 1618**  
**Bare Land Condominium**  
**Brandon, Manitoba**

Areas		
Unit No.	Area Ha.	Area Ac.
1	0.046	0.11
2	0.029	0.07
3	0.029	0.07
4	0.034	0.08
5	0.034	0.08
6	0.029	0.07
7	0.029	0.07
8	0.034	0.08
9	0.034	0.08
10	0.029	0.07
11	0.029	0.07
12	0.034	0.08
13	0.034	0.08
14	0.029	0.07
15	0.029	0.07
16	0.034	0.08

Areas		
Unit No.	Area Ha.	Area Ac.
17	0.042	0.10
18	0.030	0.07
19	0.030	0.07
20	0.036	0.09
21	0.036	0.09
22	0.030	0.07
23	0.030	0.07
24	0.036	0.09
25	0.036	0.09
26	0.030	0.07
27	0.030	0.07
28	0.036	0.09
29	0.036	0.09
30	0.030	0.07
31	0.030	0.07
32	0.036	0.09

Areas		
Unit No.	Area Ha.	Area Ac.
33	0.028	0.07
34	0.026	0.06
35	0.026	0.06
36	0.026	0.06
37	0.026	0.06
38	0.026	0.06
39	0.026	0.06
40	0.029	0.07
41	0.029	0.07
42	0.026	0.06
43	0.026	0.06
44	0.026	0.06
45	0.026	0.06
46	0.026	0.06
47	0.026	0.06
48	0.028	0.07

Areas		
Unit No.	Area Ha.	Area Ac.
49	0.041	0.10
50	0.029	0.07
51	0.029	0.07
52	0.034	0.08
53	0.034	0.08
54	0.029	0.07
55	0.029	0.07
56	0.034	0.08
57	0.034	0.08
58	0.029	0.07
59	0.029	0.07
60	0.034	0.08
61	0.034	0.08
62	0.029	0.07
63	0.034	0.08

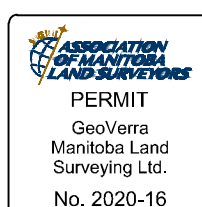


**Public Lane Plan No. 65333**

Dated at Brandon, Manitoba  
This 24th day of March, 2021

Timothy W. Longstaff  
Manitoba Land Surveyor  
Authorized to practice under the "Land Surveyors Act" of Manitoba

This document is not valid unless it bears an original signature (in blue ink) and embossed with the approved seal of the Land Surveyor across said signature. © GeoVerra Manitoba Land Surveying Ltd., 2021. All rights reserved. No person may copy, reproduce, transmit, or alter this document and no person may distribute or store copies of this document, in whole or in part.



METRIC

Scale - As Shown	Initials: HB - FG	Field Book:
Drawing: 21-00357-SAM-R0	Project No. : 21-00357-BD	Page 3 of 3