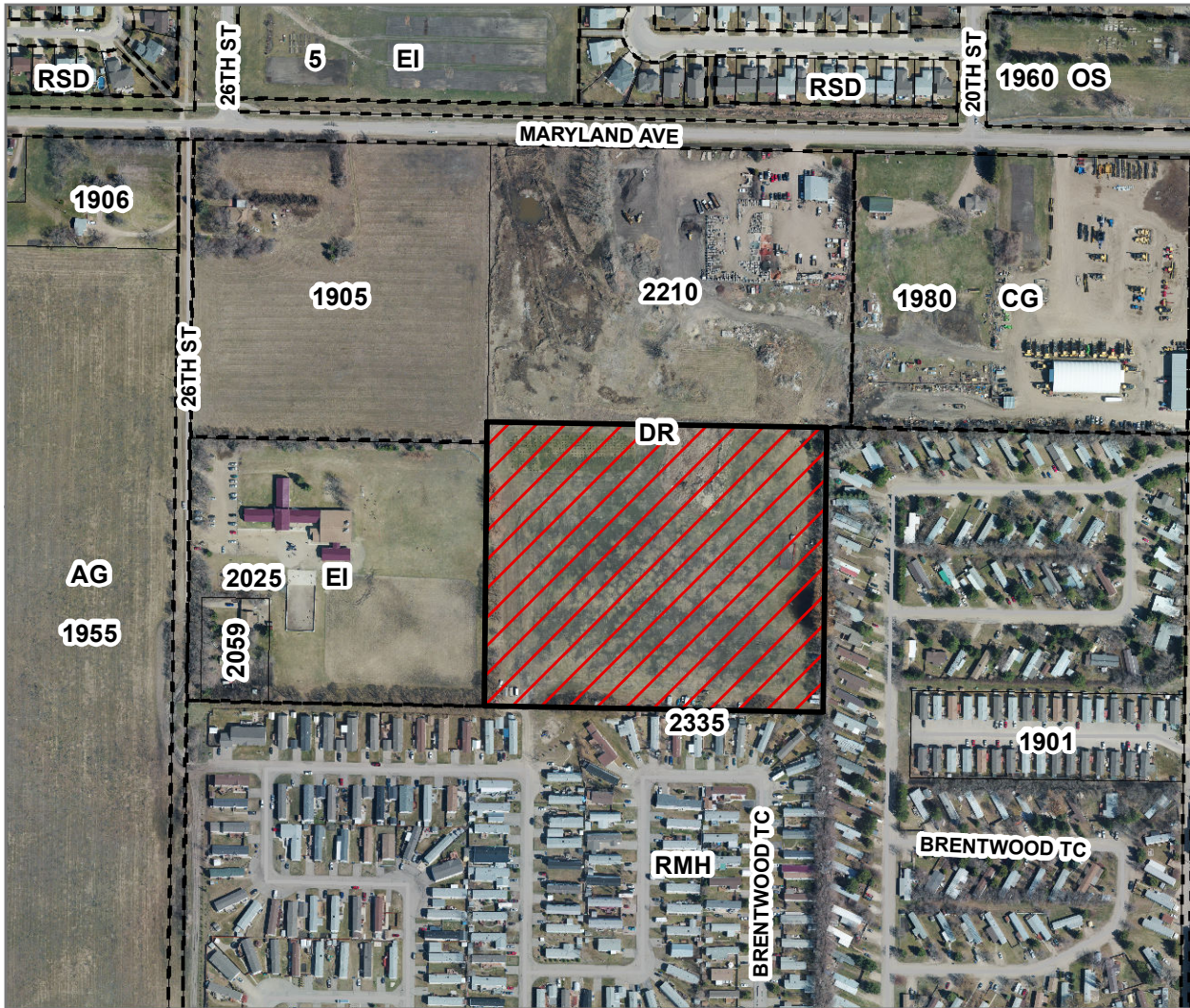
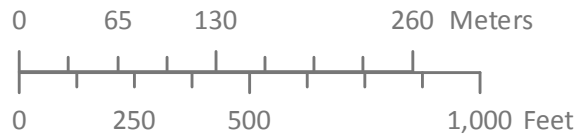



Schedule "A"



By-Law No. 7142
 Amending Schedule B of By-Law No. 7124
 Zoning By-Law Amendment Z-02-16-B
 2335 Patricia Avenue
 (Lot 2, Plan 2041 BLTO exc. Plan 41766 BLTO)



LEGEND

 Proposed lot(s) to be rezoned from DR to RMH

- AG - Agricultural General
- CG - Commercial General
- DR - Development Reserve Zone
- EI - Educational & Institutional
- OS - Open Space
- RMH - Residential Mobile/Modular Home
- RSD - Residential Single Detached

**City of Brandon
 Planning & Building
 Safety Department**



Map Created: 3/15/16
 Revised: