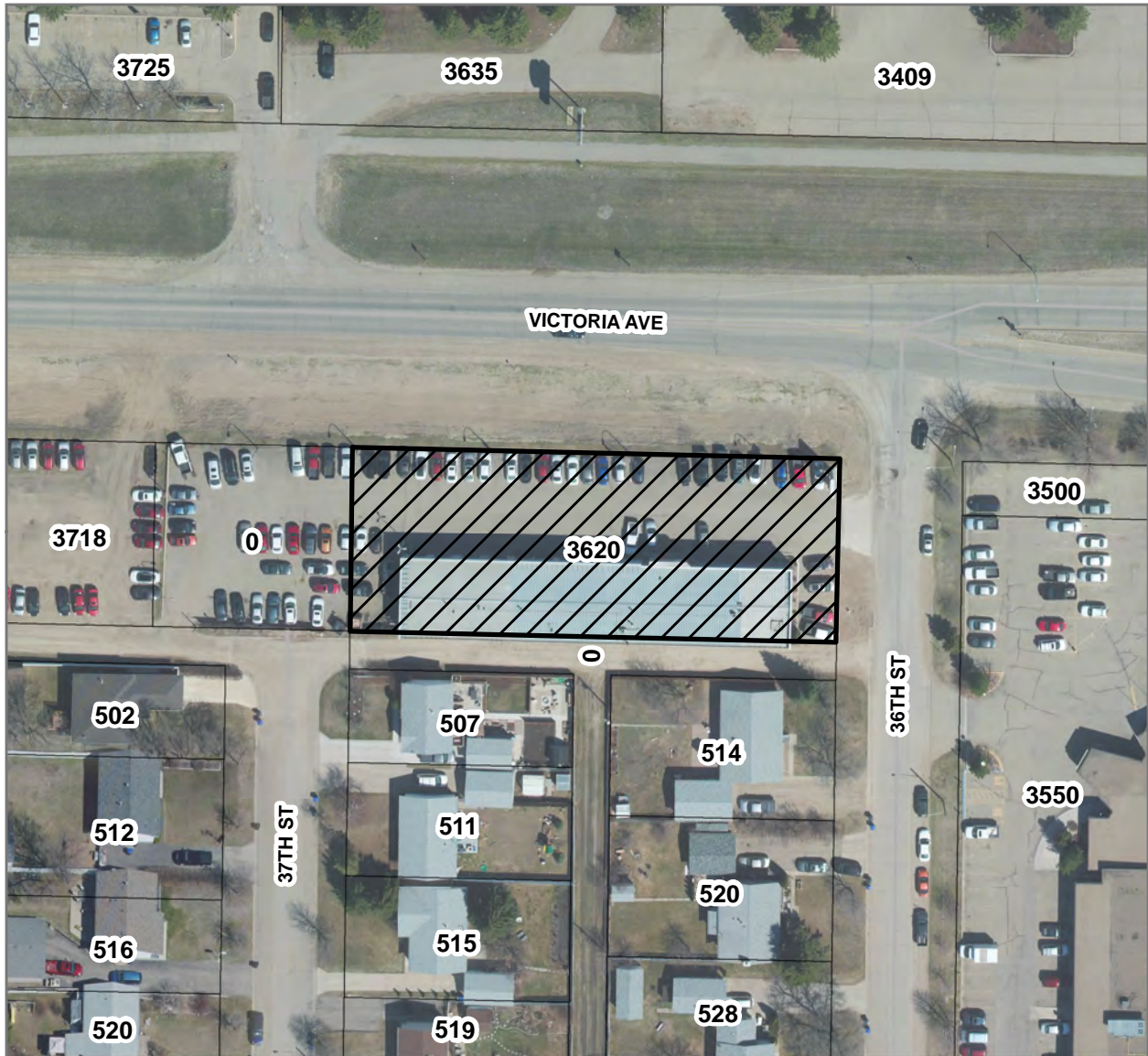


Variance Application



<p>Variance Application V-08-16-B 3620 Victoria Avenue (Lots 1/10, Block 3, Plan 260 BLTO exc. Road Plan 557 BLTO)</p>	<p>0 15 30 60 Meters</p> <p>0 55 110 220 Feet</p>
--	---

<p>LEGEND</p> <p> Lot(s) to be Varied</p>	<p>City of Brandon Planning & Building Safety Department</p>	<p>N</p>
--	--	----------

	<p>Map Created: 4/18/16</p> <p>Revised:</p>
--	---

SURVEYOR'S BUILDING LOCATION CERTIFICATE

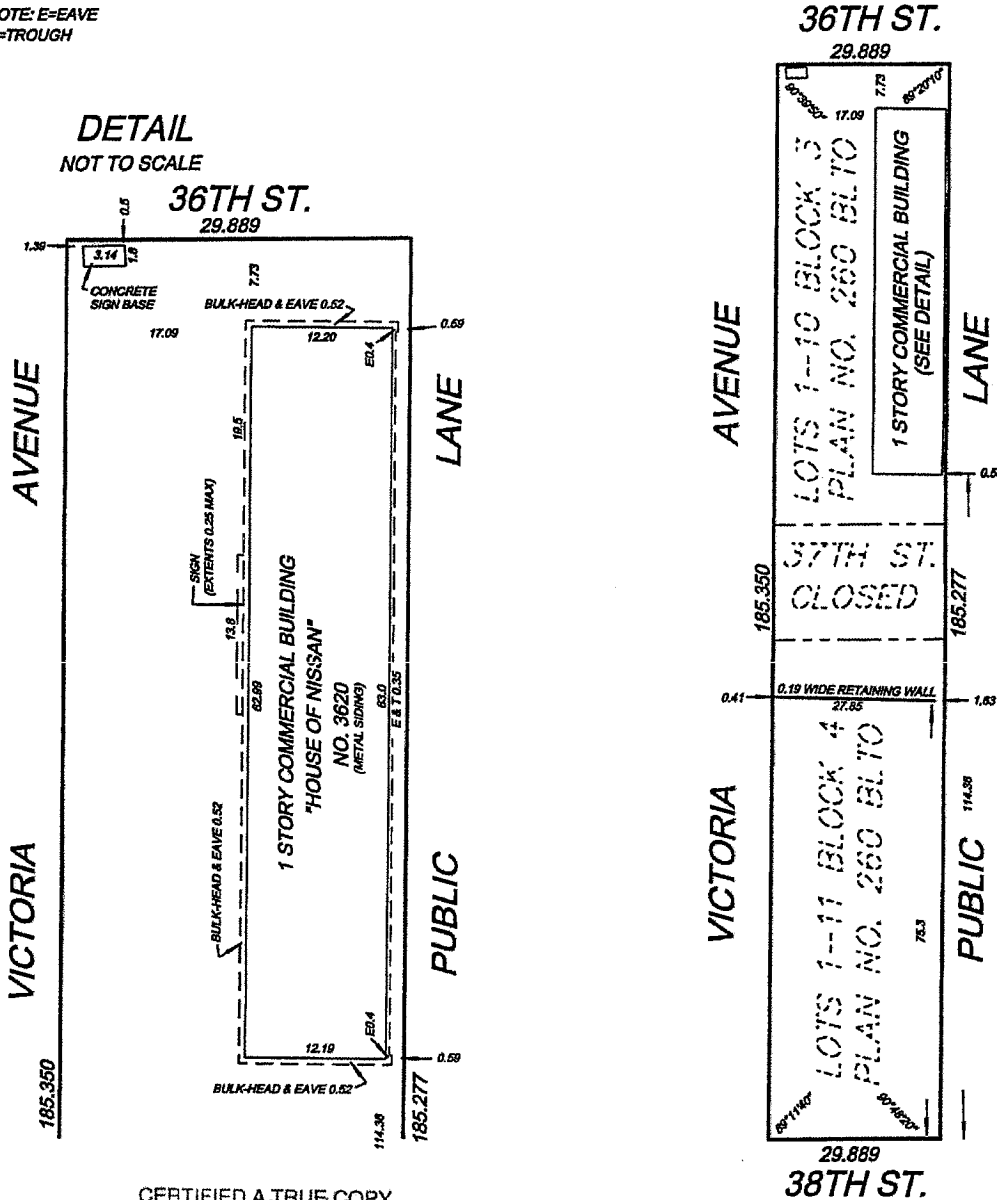


3620 VICTORIA AVENUE, BRANDON
 LOTS 1-10 BLOCK 3 AND LOTS 1-11 BLOCK 4
 AND PT. 37TH STREET (CLOSED) PLAN NO. 260 BLTO

FILE NUMBER: 116592

METRIC UNITS

NOTE: E=EAVE
 T=TROUGH



DETAIL
 NOT TO SCALE

CERTIFIED A TRUE COPY
 DATED July 6, 2009
[Signature] M.L.S.

SCALE 1:1000
 Fb/Pg 450/32
 MT
 Page 3 of 3

[Signature]
 Manitoba Land Surveyor authorized to practice
 under the "Land Surveyors Act" of Manitoba
 Signed and Sealed this 6th day of July, 2009



ALMS
 MEMBER
 100-158-11TH STREET
 BRANDON, MB R7A 4J4
 PHONE: (204)727-0551
 TOLL FREE: 1-800-365-0135
 FAX: (204)727-8247
 EMAIL: info@lennontrilogy.com

280 ASHBURTON STREET EAST
 VIRIDEN, MB R0M 2C0
 PHONE: (204)748-8900
 TOLL FREE: 1-877-748-8960
 FAX: (204)748-8185
 WEB: www.lennontrilogy.com

(c) LENNON TRILOGY PROFESSIONAL LAND SURVEYORS 2009. NO PERSON MAY COPY, REPRODUCE, TRANSMIT, OR ALTER THIS DOCUMENT. NO PERSON MAY DISTRIBUTE OR STORE COPIES OF THIS DOCUMENT, IN WHOLE OR IN PART.