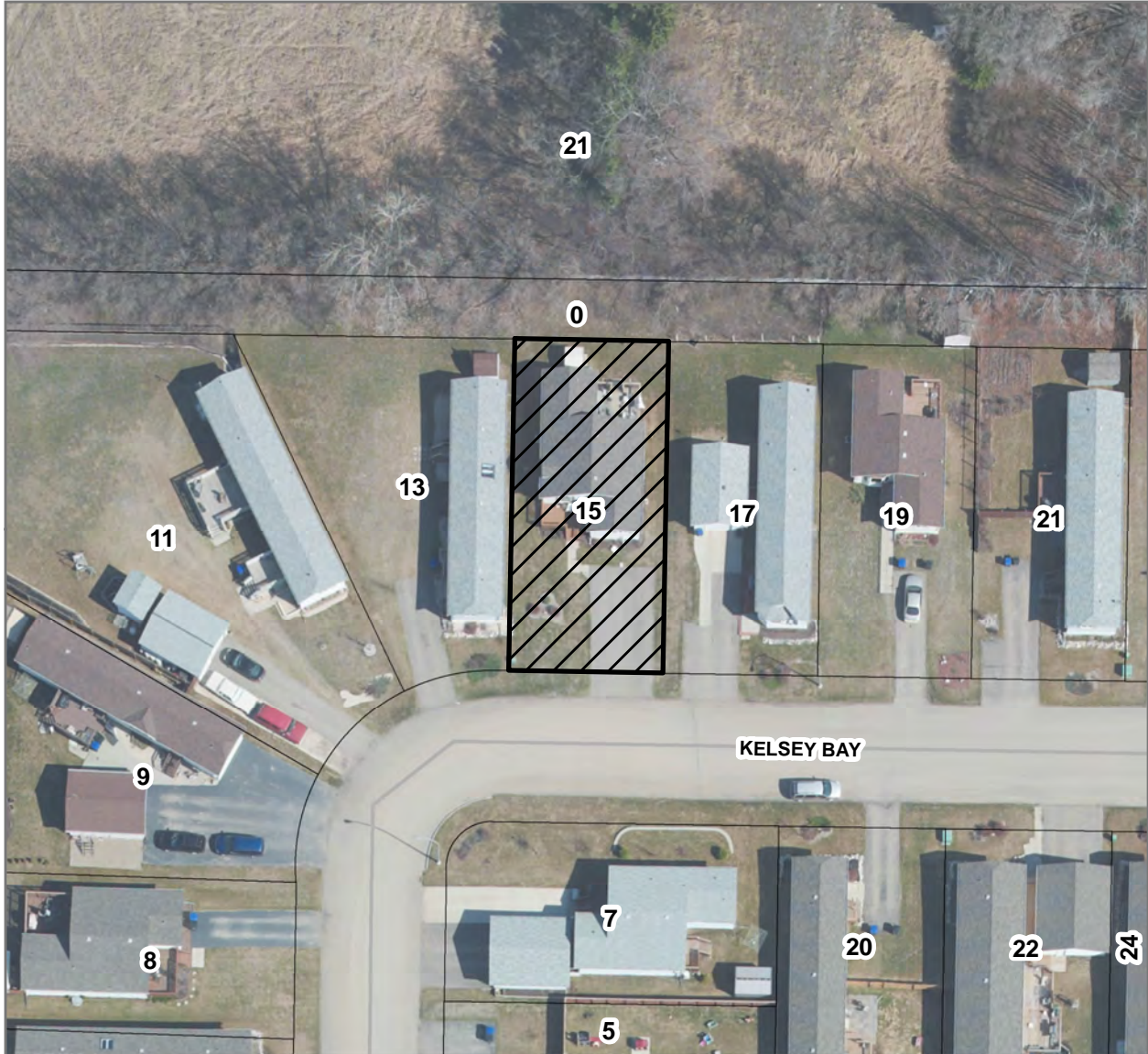



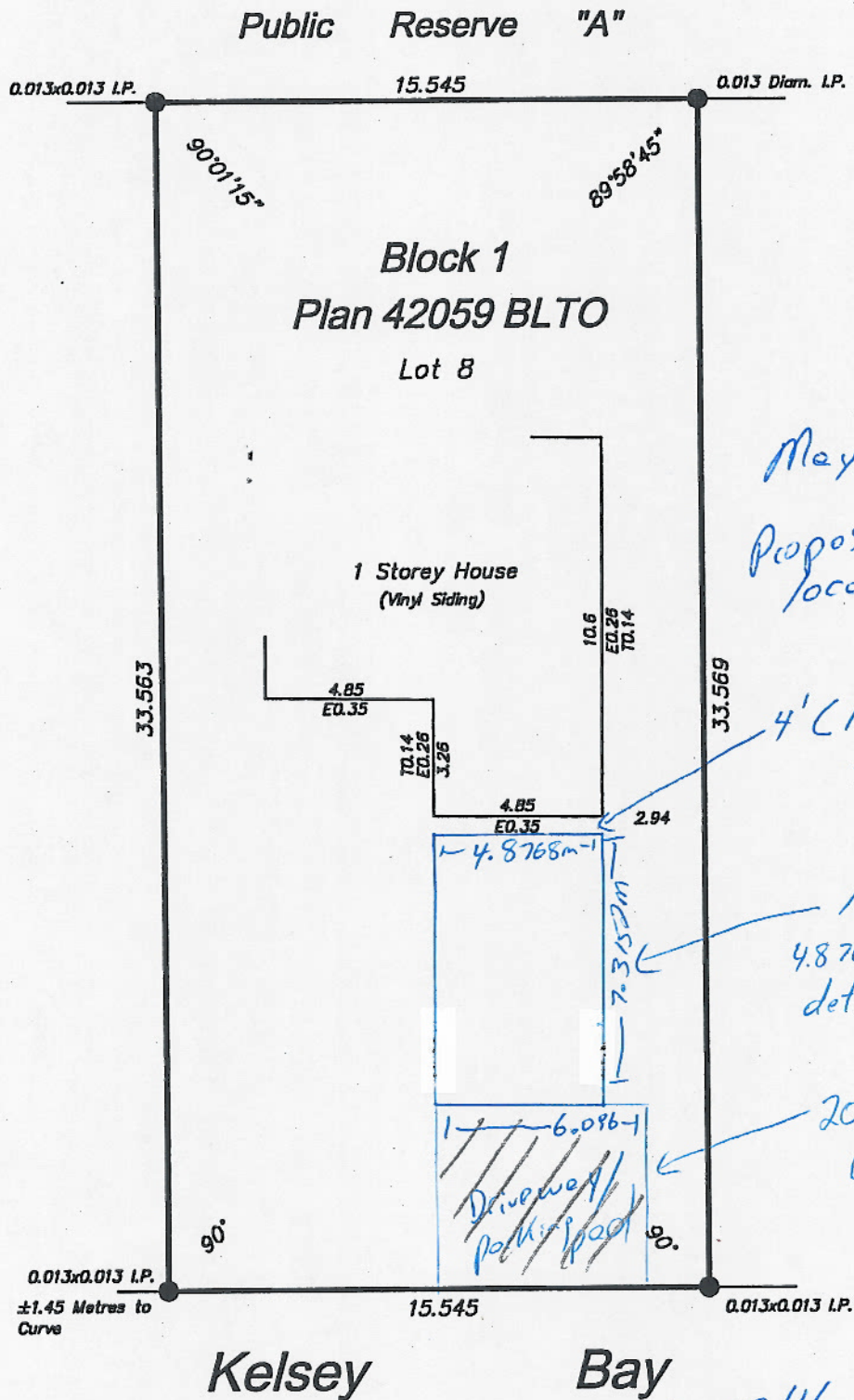


Variance Application



<p>Variance Application V-07-16-B 15 Kelsey Bay (Lot 8, Block 1, Plan 42059 BLTO)</p>	<p>0 10 20 40 Meters</p> <p>0 35 70 140 Feet</p>	
<p>LEGEND</p> <p> Lot(s) to be Varied</p>	<p>City of Brandon Planning & Building Safety Department</p>	<p>N</p> 
	<p>Map Created: 4/6/16</p> <p>Revised:</p>	

Surveyor's Staking Certificate



May 10, 2016.
 Proposed Garage
 location + Parking

4' (1.2192m)
 space

16' w x 24' L
 4.8768m x 7.3152m
 detached garage

20' w x approx. 24' L
 Driveway/Parking
 PAD

May 10/16
 Submitted by
 SHAWN D. LAMB
 S.D.L.

Iron survey posts were found or placed at all points shown thus

Metric

Distances shown are in Metres and
 decimals of a Metre and can be converted
 to Feet by multiplying by 3.28084.

Scale - 1:200

Signed, Sealed and Dated
 this 31st day of March, 2016

Gary R. Pawluk
 Manitoba Land Surveyor

File No. 16-055

Copyright Prairie Benchmark 2016

All rights reserved. No person may copy, reproduce, transmit, alter, distribute or store copies of this document in whole or in part.