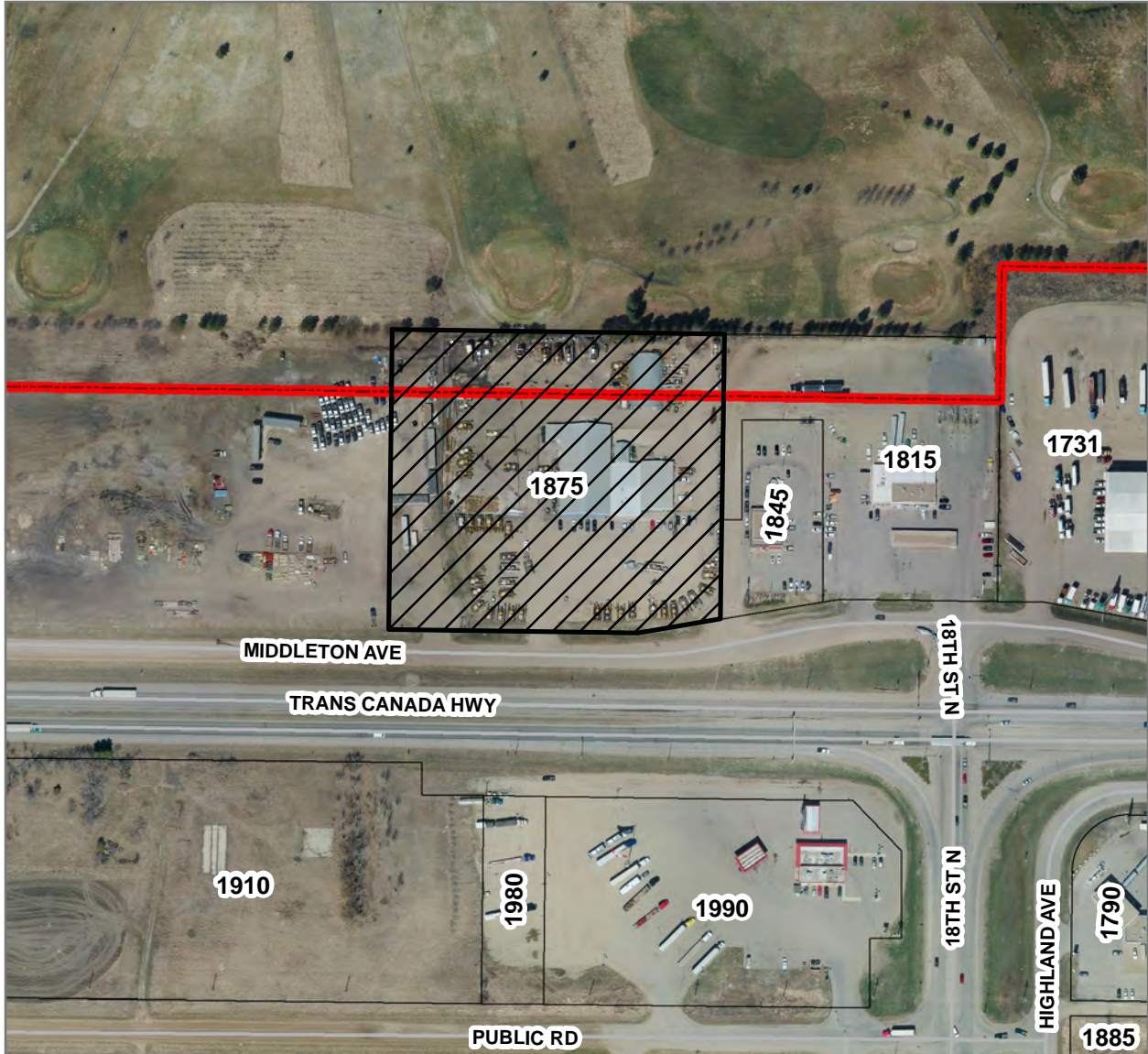




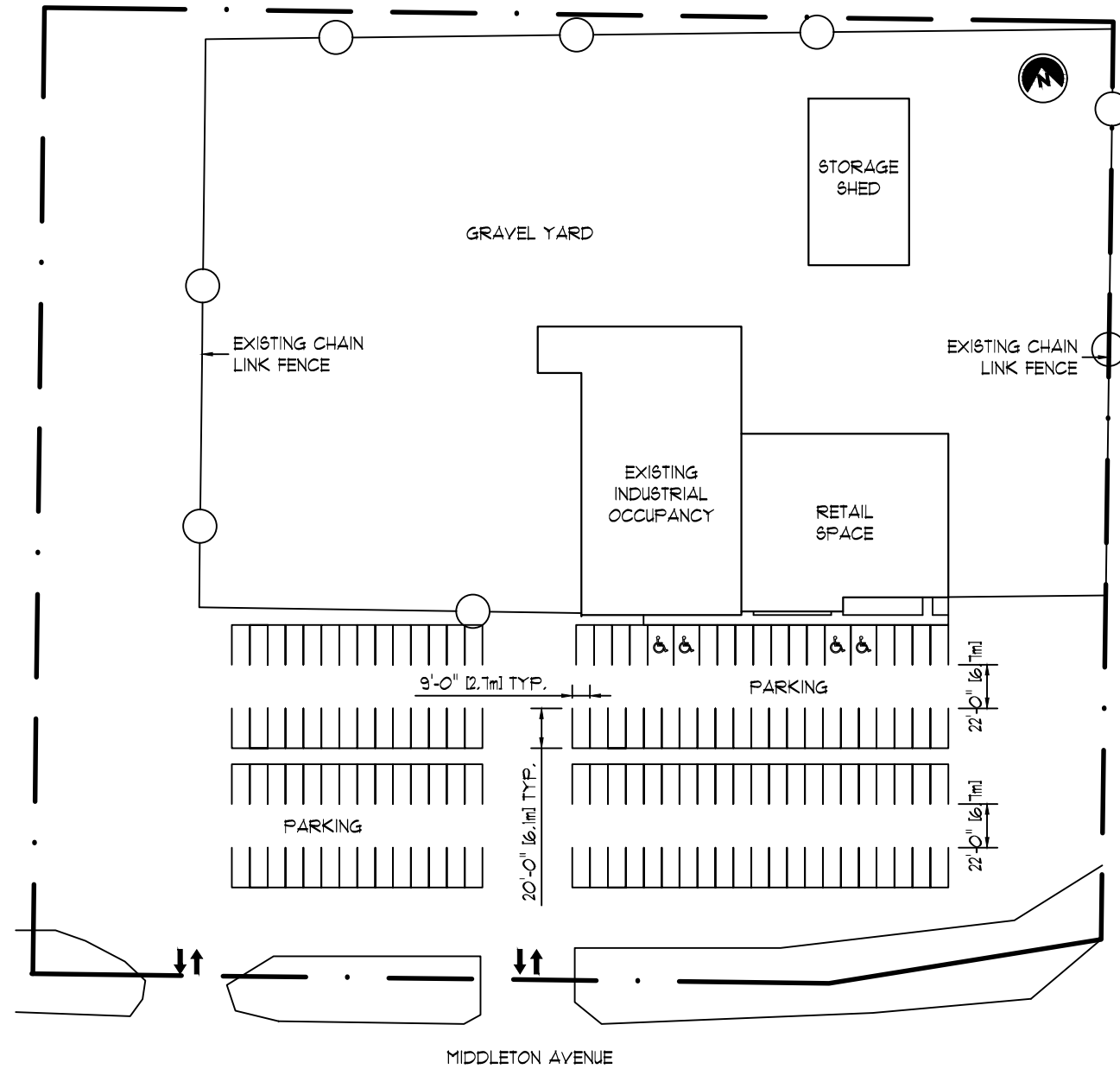


Conditional Use Application

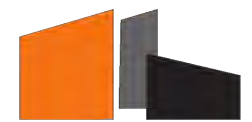


<p>Applications C-02-16-B 1875 Middleton Avenue (Lot 3, Plan 37171 BLTO)</p>	<p>0 45 90 180 Meters</p> <p>0 125 250 500 Feet</p>	
<p>LEGEND</p> <p> Affected Lot(s)</p> <p> City of Brandon Boundary</p>	<p>City of Brandon Planning & Building Safety Department</p>	<p>N</p> 
	<p>Map Created: 2/3/16</p> <p>Revised:</p>	

1991 MIDDLETON AVENUE



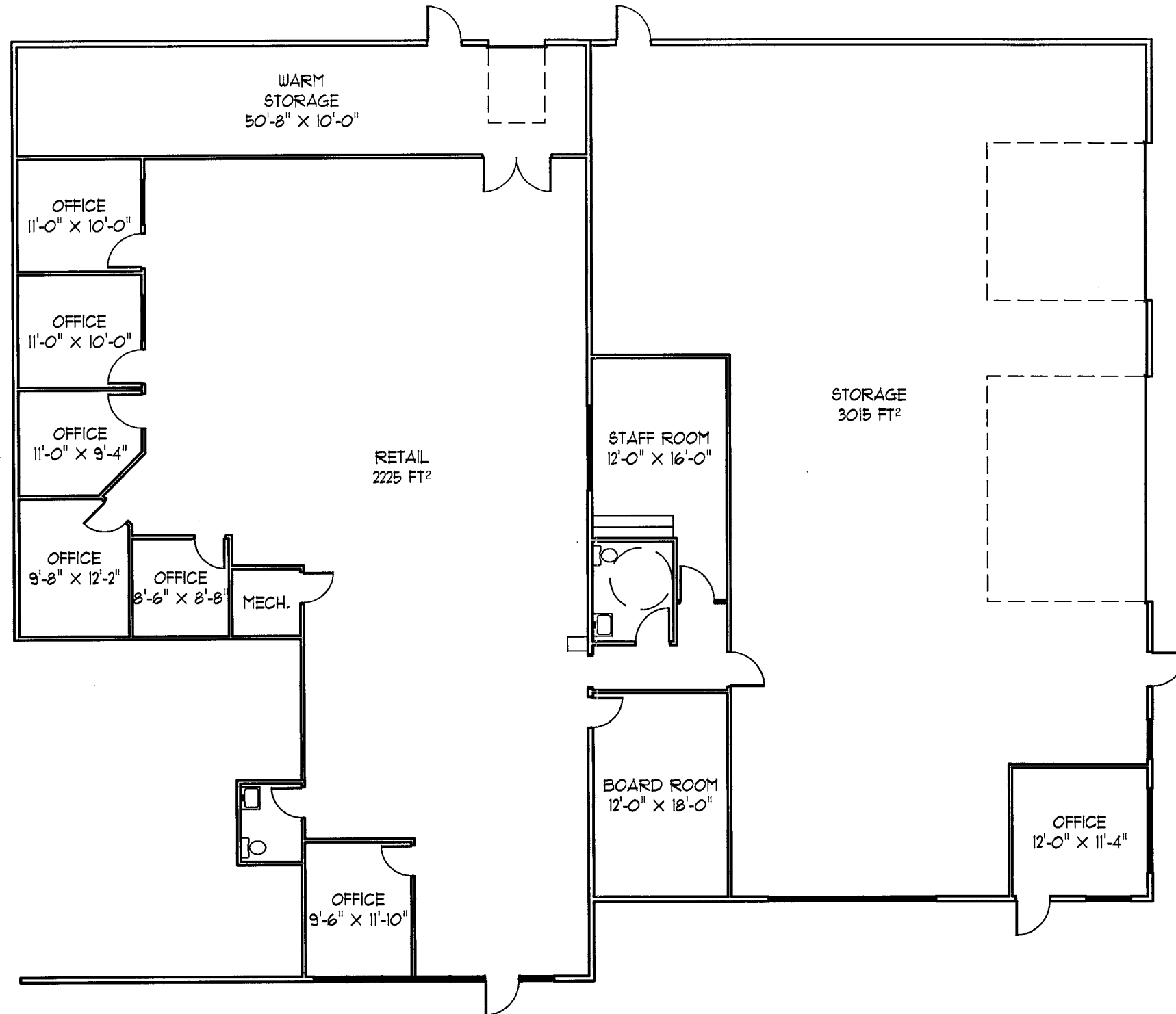
A SITE PLAN
1:1000



YBRDESIGN

833-4TH STREET N, BRANDON, MB R7A 2M9
204.727.4049 + RBURGESS@YBRDESIGN.CA

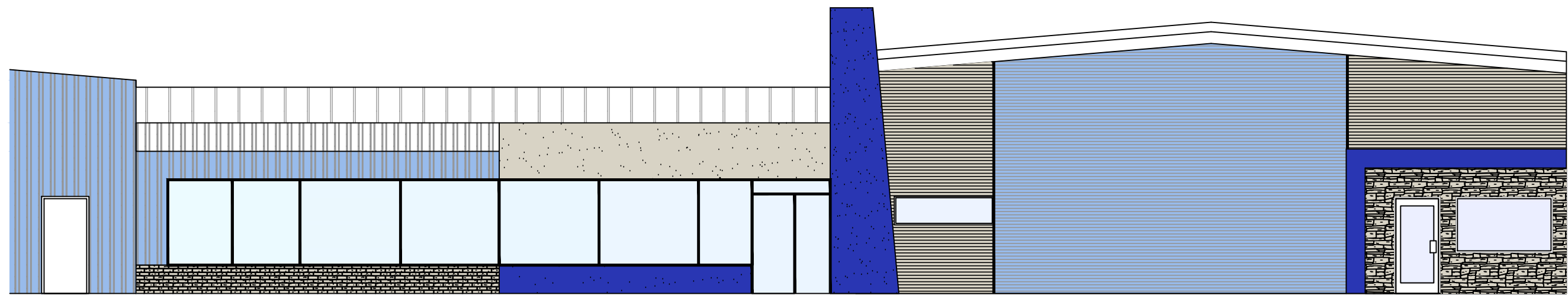
1875 MIDDLETON AVENUE



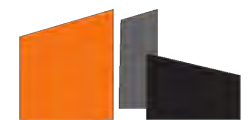
YBRDESIGN

833-4TH STREET N, BRANDON, MB R7A 2M9
204.727.4049 + RBURGESS@YBRDESIGN.CA

1875 MIDDLETON AVENUE



E1 SOUTH EXTERIOR ELEVATION
1/8" = 1'



YBRDESIGN

833-4TH STREET N, BRANDON, MB R7A 2M9
204.727.4049 + RBURGESS@YBRDESIGN.CA