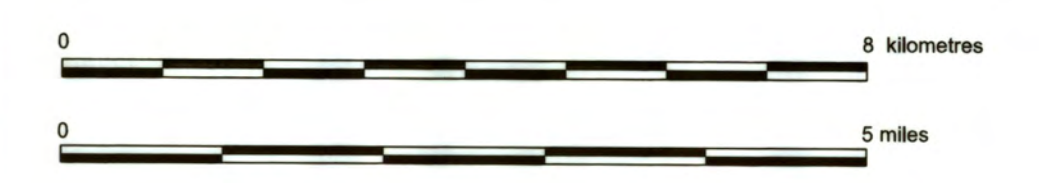


Filed in the Office of the Director of Surveys at Winnipeg, this 4<sup>th</sup> day of November, 2017, as Plan No. **20612**

*Silver*  
Director of Surveys

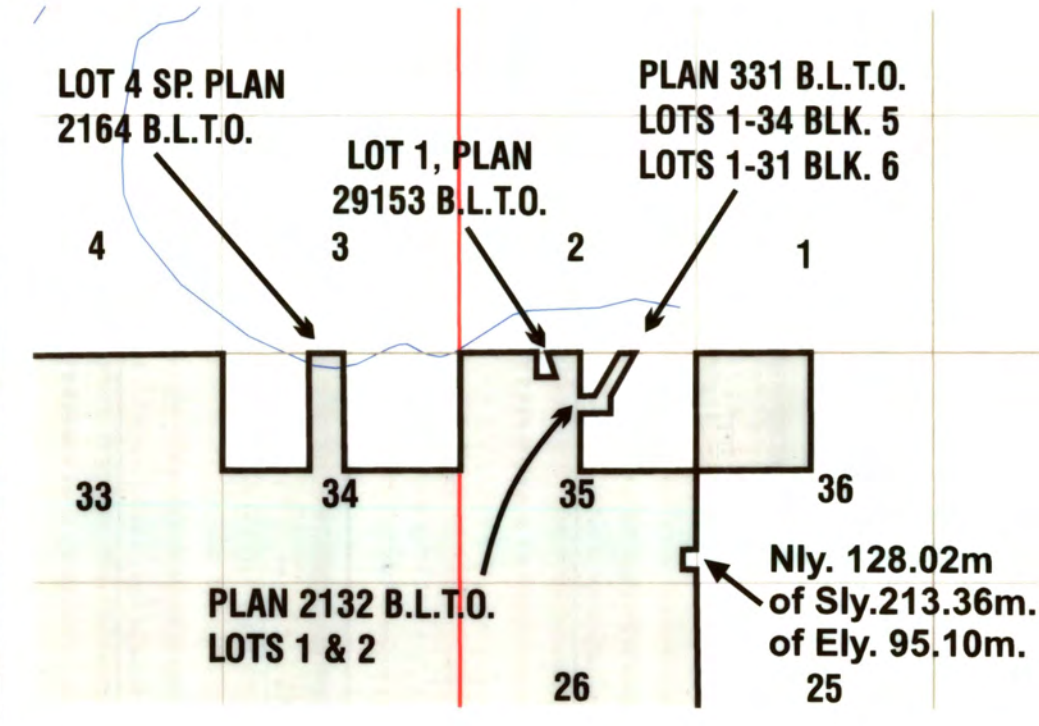
**ADMINISTRATIVE BOUNDARY PLAN OF BRANDON SCHOOL DIVISION**



Unless otherwise indicated the School Division Boundary follows the north and east limits of sections and quarter sections.

School Division Boundary is shown bordered thus

**DETAIL AT "A" (not to scale)**



Approved this 3<sup>rd</sup> day of November 2017

*Sham Curtis*  
Department of Education and Training  
Education et Formation

Certified Correct this 6<sup>th</sup> day of September 2017

*D. Hoyle*  
Dewey Michael Roger Hoplock M.L.S.