



# Conditional Use Application



<p>Conditional Use Application C-16-18-B              845 18th Street              Lots 7 to 10 Both Inclusive Block 4 Plan 16 BLTO              In NW 1/4 14-10-19 WPM</p>	<p>0 10 20 40 Meters</p> <p>0 35 70 140 Feet</p>	
<p><b>LEGEND</b></p> <p> Affected Lot</p>	<p><b>City of Brandon              Planning &amp; Buildings              Department</b></p>	<p><b>N</b></p>
	<p>Map Created: 10/25/2018</p> <p>Revised:</p>	

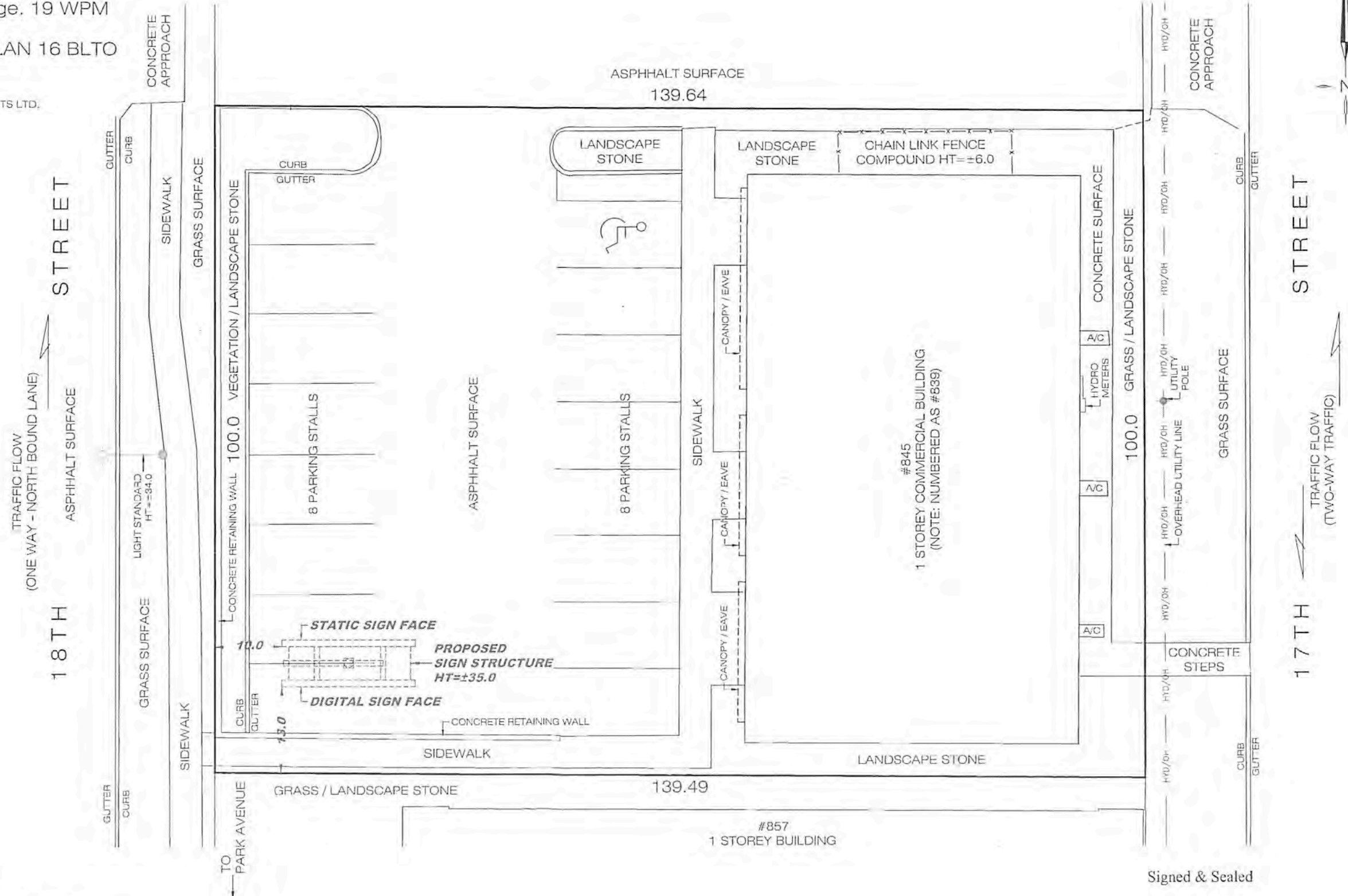
SKETCH FOR PATTISON OUTDOOR ADVERTISING

#845 18th STREET, BRANDON, MANITOBA

OF PART OF  
NW 1/2 Sec. 14, Twp. 10, Rge. 19 WPM  
BEING  
LOTS 11 to 14, BLOCK 4, PLAN 16 BLTO

CERTIFICATE TITLE No. : 2540479/2

REGISTERED OWNER: B.J. NELSON DEVELOPMENTS LTD.



**BARNES & DUNCAN** 1906

SURVEYING, ENGINEERING & GEOMATICS

6 Donald Street  
Winnipeg, Manitoba  
R3L 0K6

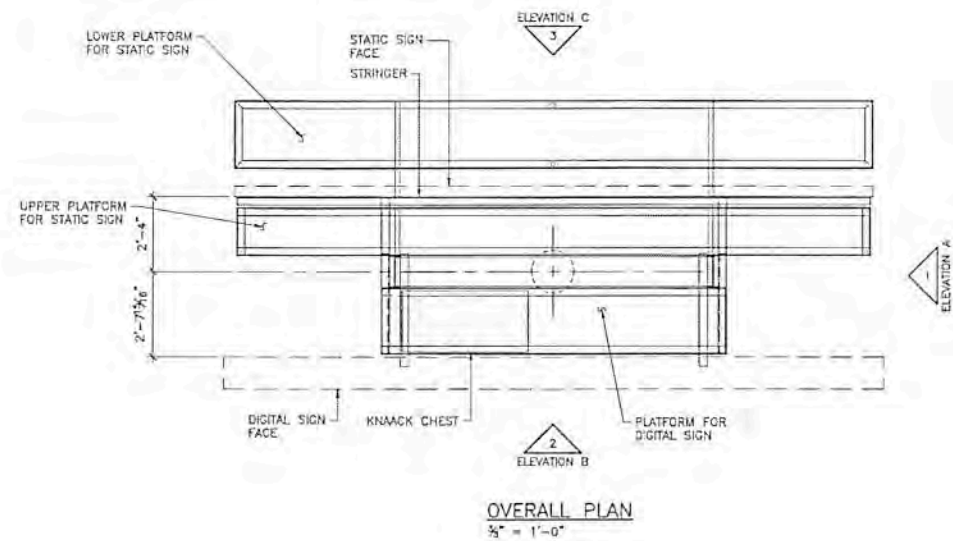
180-A, 5th Street  
Morden, Manitoba  
R6M 1C9

Our File: 2018/0932  
Acad dwg: 18-0932 sketch  
Field Book: 1343/76-77 BD  
Drafter: Stu

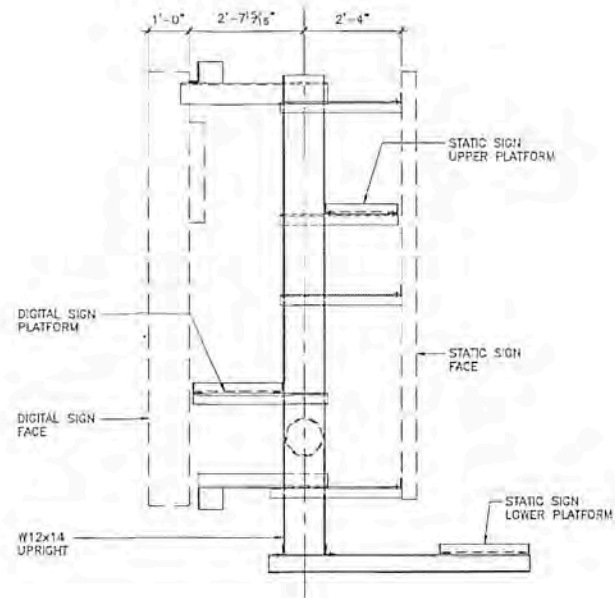
SKETCH - all distances are in feet and decimals of a foot.  
This survey was made on the 8th day of August, 2018.

Kelly W. Mantik, M.L.S.  
this 10th day of October, 2018

Page 1 of 1



OVERALL PLAN  
3/8" = 1'-0"



A ELEVATION  
1/2" = 1'-0"

GENERAL NOTES

- LOADS**
- DESIGN CONFORMS TO THE 2011 MANITOBA BUILDING CODE.
  - DESIGN LOADS:  
DESIGN WIND PRESSURE = 1.03 kPa (21.5 psf)  
1/50 YEAR WIND: 0.49 kPa (10.2 psf)  
PLATFORM LIVE LOAD: 1.47 kPa (30 psf) OR 500 lbs CONCENTRATED LOAD  
SIGN FACE LOADS: STATIC FACE: 2.2 kN (500 lbs)  
DIGITAL FACE: 13.4 kN (3000 lbs)
- FOUNDATION**
- EMBEDMENT DEPTH FOR THE PILE DOES NOT APPLY TO LOCATIONS WHERE WALLS OF THE HOLE WILL NOT STAND UN-SUPPORTED (i.e. CASING REQUIRED) OR WHERE UNCOMPACTED FILL OR ORGANIC SOILS EXIST.
  - DESIGN IS BASED ON THE FOLLOWING ULTIMATE LATERAL SOIL RESISTANCE, TOGETHER WITH A SAFETY FACTOR OF 1.5:  
CLAY SOILS - 450 kPa (9900 psf) BASED ON UNRAINED SHEAR STRENGTH OF 55 kPa (1000 psf), TYPICAL FOR FIRM TO STIFF CLAY.  
GRAVELLY SANDS - COEFFICIENT OF PASSIVE EARTH PRESSURE = 3.4, TYPICAL FOR COMPACT TO DENSE SAND, AS DEFINED BY ALBERTA BUILDING CODE, PART 9.  
VERIFY SOIL TYPE DURING EXCAVATION. NOTIFY ENGINEER IF SOIL DOES NOT SATISFY THE ABOVE REQUIREMENTS.
- STRUCTURAL STEEL**
- STRUCTURAL STEEL SHALL CONFORM TO CSA G40.20 AND CSA G40.21 GRADE 350W EXCEPT PLATES TO 200W, PIPE TO ASTM A552 GRADE 2 WITH MINIMUM 35 ksi (240 MPa) YIELD STRENGTH.
  - ALL WELDING SHALL CONFORM TO CSA W59.
  - ALL BOLTS SHALL CONFORM TO ASTM A307 OR A325 AS NOTED. TIGHTEN A307 BOLTS SNUG TIGHT AND A325 BOLTS USING THE TURN OF THE NUT METHOD. ALL BOLTS TO BE OAD PLATED.
  - SIGN STRUCTURE TO BE PAINTED TO PATISSON SPECIFICATIONS TO PREVENT CORROSION.
- CAST-IN PLACE CONCRETE**
- CONCRETE FOR THE PILE SHALL HAVE A 1/2" MAXIMUM AGGREGATE SIZE, MINIMUM 28 DAY COMPRESSIVE STRENGTH OF 4800 psi (33 MPa), 4 - #5 @ 48", 4" SLUMP AND TYPE HS CEMENT.
- DIRECTION**
- THE PIPE COLUMN SHALL BE EXTENDED TO THE BOTTOM OF THE PILE.
  - NOTIFY THE ENGINEER IF THE SIGN IS TO BE LOCATED NEAR BUILDINGS.
- HORIZONTAL LIFE LINE SYSTEMS**
- HORIZONTAL LIFELINE REFER TO DRAWING 1 OF 1 BY CHARDON INDUSTRIAL SOLUTIONS LTD DATED 03/02/2008 TITLED "5000 LB SIGN POST FALL ARREST CABLE SYSTEM". HORIZONTAL LIFELINE TO BE INSTALLED AND USED IN ACCORDANCE WITH MANUFACTURER'S INSTRUCTIONS. MAXIMUM CAPACITY OF HORIZONTAL LIFELINE IS ONE PERSON. THE MAXIMUM WEIGHT OF EACH PERSON, INCLUDING TOOLS AND CLOTHING, IS 319 LBS.
  - THE USER'S CONNECTING SUBSYSTEM MUST MEET FALL ARREST FORCES TO 600 LBS OR LESS.
  - ANCHORAGE STRENGTH REQUIREMENTS: 5000 LBS. MINIMUM ALONG THE AXIS OF THE HORIZONTAL LIFELINE, AND 3600 LBS. MINIMUM IN DIRECTIONS OF FALL ARREST THAT ARE PERPENDICULAR TO THE HORIZONTAL LIFELINE.
  - THE FALL SYSTEM SHALL BE INSPECTED BY WORKER AS REQUIRED BY THE MANUFACTURER BEFORE IT IS USED ON EACH WORK SHIFT.
  - THE FALL SYSTEM SHALL ALSO BE INSPECTED EACH TIME IT IS SUBJECTED TO A FALL ARREST EVENT AND REPAIRS SHALL BE MADE ACCORDINGLY.

No.	DATE	ISSUED FOR CONSTRUCTION	BY
0	OCT 10, 2018	ISSUED FOR CONSTRUCTION	JMcC

**REVISIONS**

**SEAL**

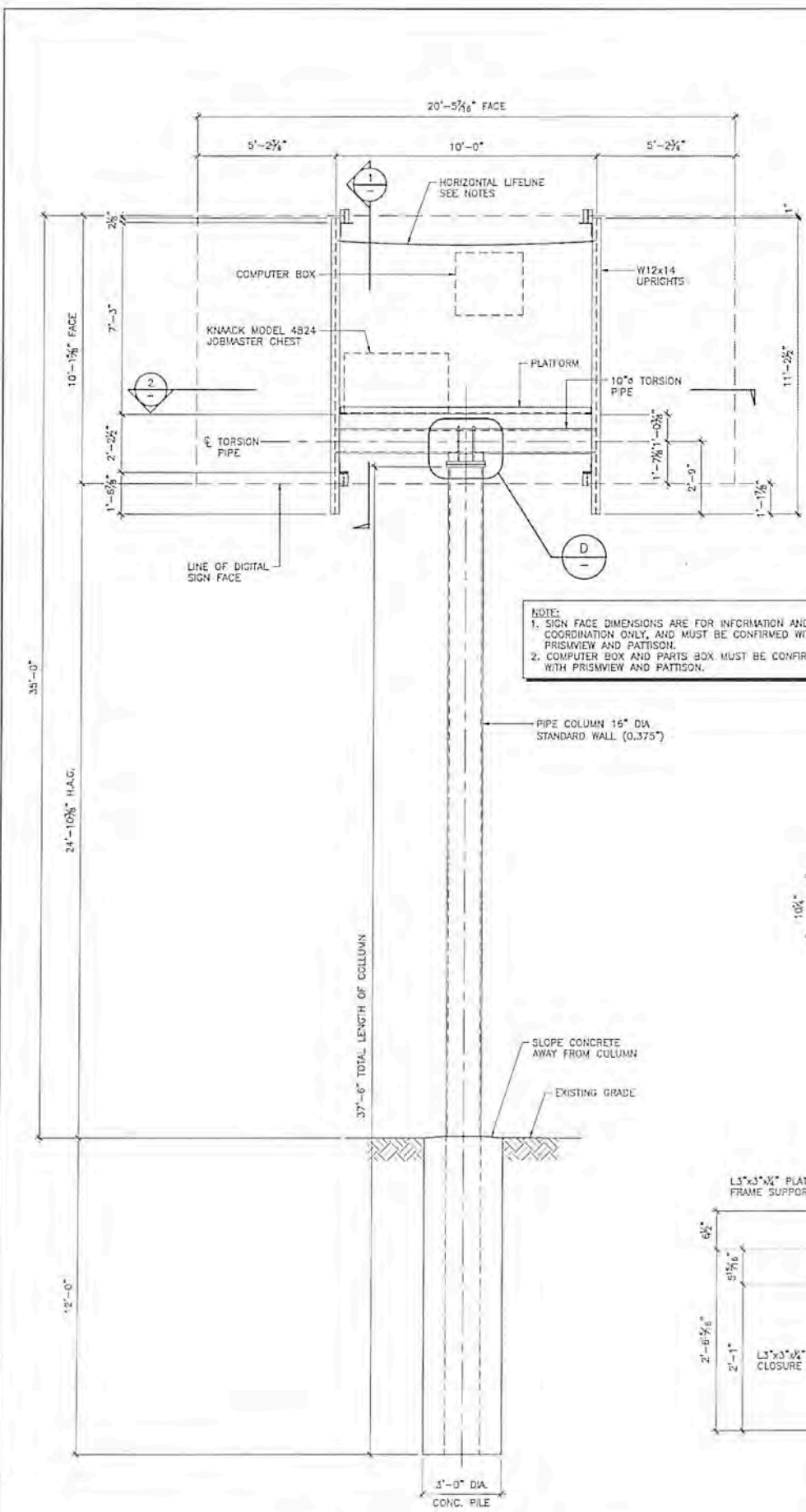
**APCCM**  
Certificate of Authorization  
BPTec Engineering Ltd.  
No. 5745 Date: 2018 Oct 16

CLIENT  
**PATTISON OUTDOOR GROUP**

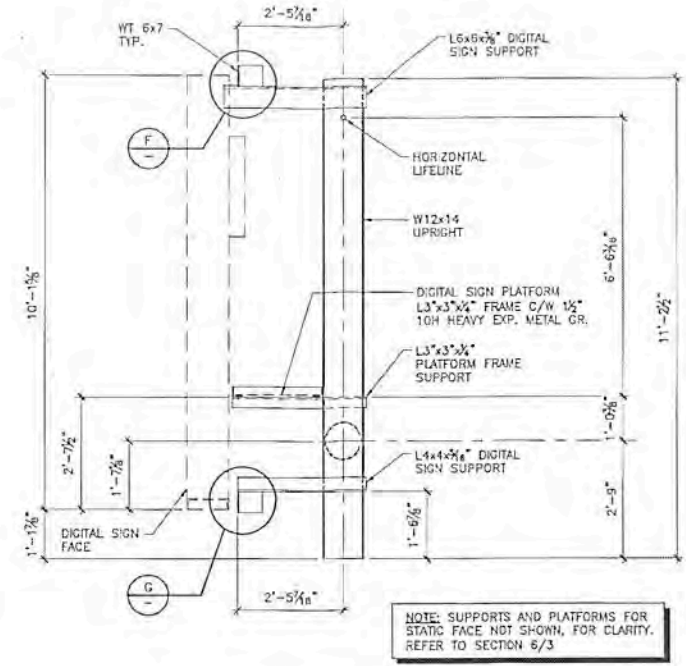
PROJECT  
**10x20 HORIZONTAL SIGN  
STRUCTURE - ONE FACE  
STATIC ONE FACE DIGITAL  
845 - 18th STREET  
BRANDON, MB**

DRAWING TITLE  
**GENERAL ARRANGEMENT  
AND  
GENERAL NOTES  
BACK TO BACK  
CENTREMOUNT 25' HAG**

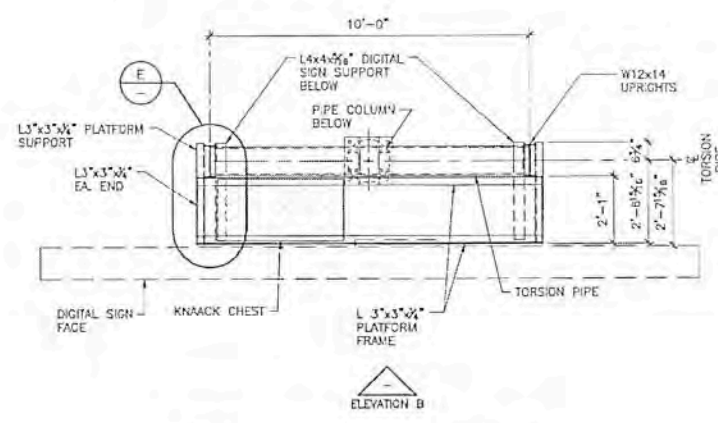
DRAWN BY	AD	CHECKED BY	JMcC
DESIGNED BY	JMcC	FILE No.	576-486
SCALE	AS NOTED	DATE	OCT 2018
DRAWING No.	576-486-1 OF 3		REV. 0



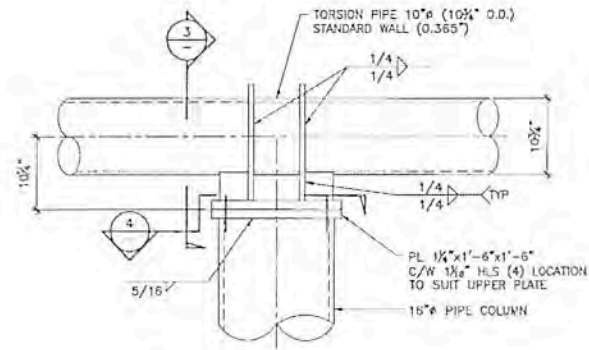
NOTES:  
 1. SIGN FACE DIMENSIONS ARE FOR INFORMATION AND COORDINATION ONLY, AND MUST BE CONFIRMED WITH PRISMVIEW AND PATTISON.  
 2. COMPUTER BOX AND PARTS BOX MUST BE CONFIRMED WITH PRISMVIEW AND PATTISON.



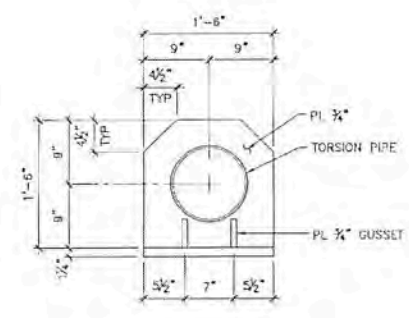
1 SECTION-DIGITAL FACE  
 1/2" = 1'-0"



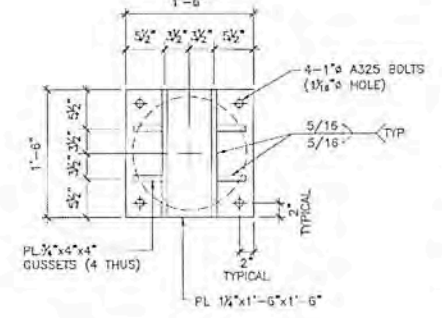
2 SECTION-DIGITAL FACE  
 3/8" = 1'-0"



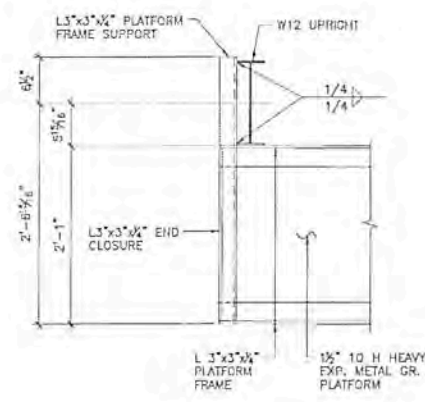
D DETAIL  
 2, 3 1" = 1'-0"



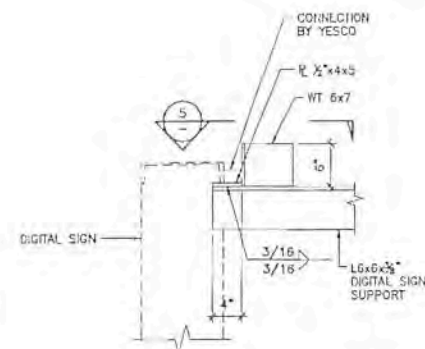
3 SECTION  
 1" = 1'-0"



4 SECTION  
 1" = 1'-0"

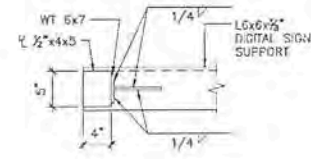


E DETAIL  
 1" = 1'-0"

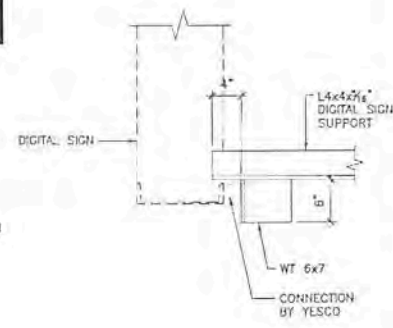


F DETAIL  
 1" = 1'-0"

WELDING NOTE:  
 MINIMUM WELD TO BE 1/2" FILLET UNLESS SHOWN OTHERWISE



5 SECTION  
 1" = 1'-0"



G DETAIL  
 1" = 1'-0"

B ELEVATION - DIGITAL FACE  
 3/8" = 1'-0"

0	OCT 16, 2018	ISSUED FOR CONSTRUCTION	JMcC
No.	DATE	ITEM	BY

REVISIONS

BPTec ENGINEERING  
 Suite 200, 4220-38 Street NW Edmonton, AB T6E 6R1 (780) 436-5375  
 www.bptec.ca

THIS DRAWING IS THE PROPERTY OF BPTec ENGINEERING AND MAY NOT BE REPRODUCED WITHOUT PERMISSION. DO NOT SCALE DRAWING. REPORT ANY DISCREPANCIES IN DIMENSIONS TO BPTec ENGINEERING.

SEAL

J.C. McCuine  
 P.Eng. No. 20004  
 2018 Oct 16

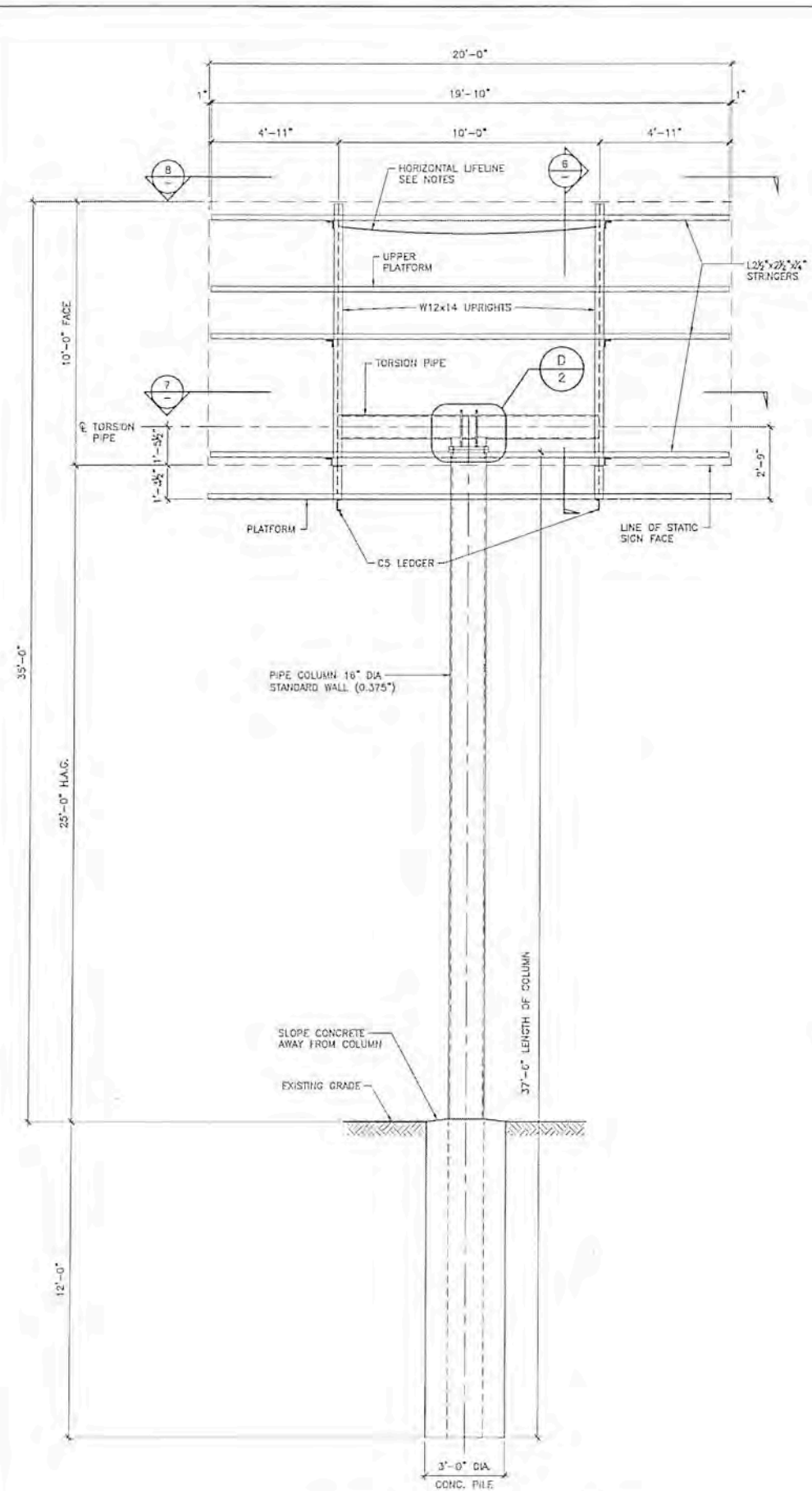
APECM  
 Certificate of Authorization  
 BPTec Engineering Ltd.  
 No. 5745 Date: 2018 Oct 16

CLIENT  
**PATTISON OUTDOOR GROUP**

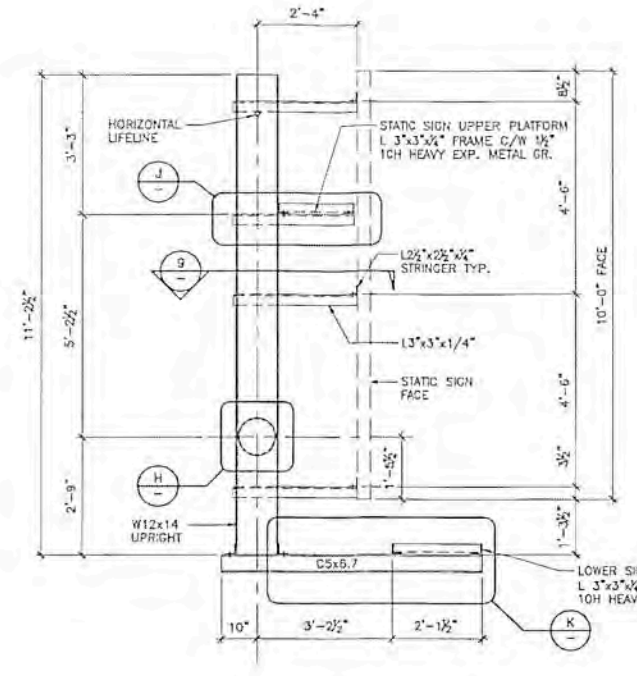
PROJECT  
**10x20 HORIZONTAL SIGN STRUCTURE - ONE FACE STATIC ONE FACE DIGITAL 845 - 18th STREET BRANDON, MB**

DRAWING TITLE  
**DIGITAL FACE ELEVATION AND DETAILS BACK TO BACK CENTREMOUNT, 25' HAG**

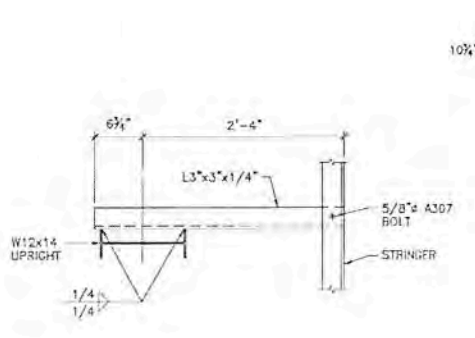
DRAWN BY	AD	CHECKED BY	JMcC
DESIGNED BY	JMcC	FILE No.	576-486
SCALE	AS NOTED	DATE	OCT 2018
DRAWING No.	576-486-2 OF 3		REV. 0



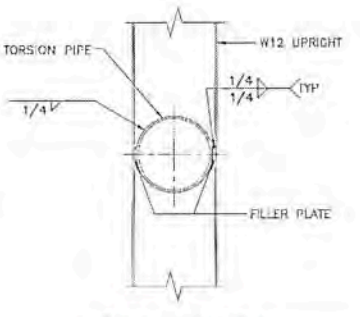
**C**  
ELEVATION - STATIC FACE  
3/8" = 1'-0"



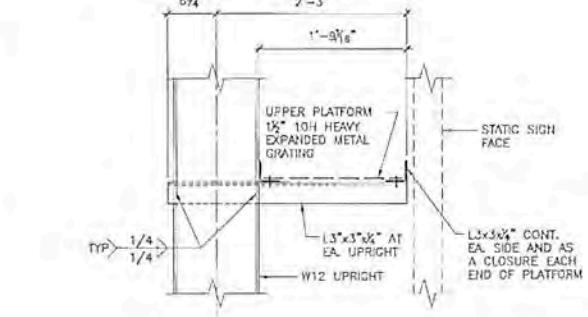
**6**  
SECTION-STATIC FACE  
1/2" = 1'-0"



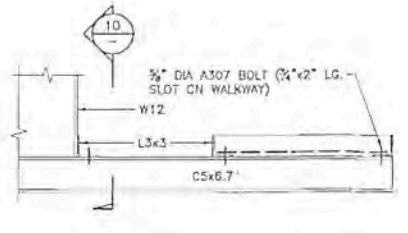
**9**  
SECTION  
1" = 1'-0"



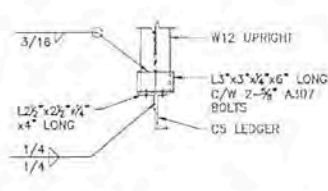
**H**  
DETAIL  
1" = 1'-0"



**J**  
DETAIL  
1" = 1'-0"

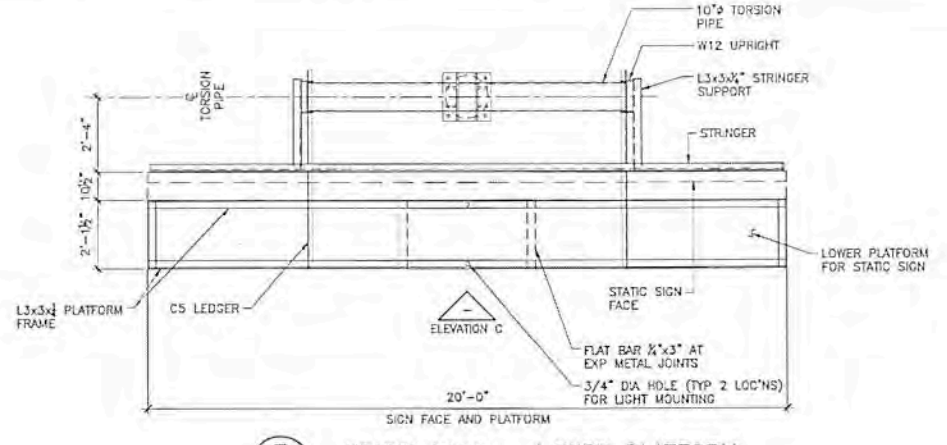


**K**  
DETAIL  
1" = 1'-0"

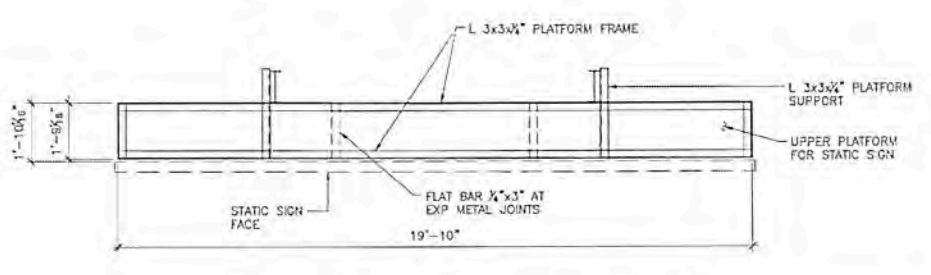


**10**  
SECTION  
1" = 1'-0"

**WELDING NOTE:**  
MINIMUM WELD TO BE 1/4" FILLET UNLESS SHOWN OTHERWISE



**7**  
STATIC FACE - LOWER PLATFORM  
3/8" = 1'-0"



**8**  
STATIC FACE - UPPER PLATFORM  
3/8" = 1'-0"

No.	DATE	ITEM	BY
D	OCT 15, 2018	ISSUED FOR CONSTRUCTION	JMcC

**REVISIONS**

**SEAL**

**APECM**  
Certificate of Authorization  
BPTec Engineering Ltd.  
No. 5745 Date: 2018 Oct 18  
2018 Oct 18

**CLIENT**  
PATTISON OUTDOOR GROUP

**PROJECT**  
10x20 HORIZONTAL SIGN STRUCTURE - ONE FACE  
STATIC ONE FACE DIGITAL  
845 - 18th STREET  
BRANDON, MB

**DRAWING TITLE**  
STATIC FACE ELEVATION AND DETAILS  
BACK TO BACK  
CENTREMOUNT, 25' HAG

DRAWN BY	AD	CHECKED BY	JMcC
DESIGNED BY	JMcC	FILE No.	576-486
SCALE	AS NOTED	DATE	OCT 2018
DRAWING No.	576-486-3 OF 3	REV.	0